

SPEICHER



MALZFABRIK EVENT

+49 30 755 17 125 • location@malzfabrik.de

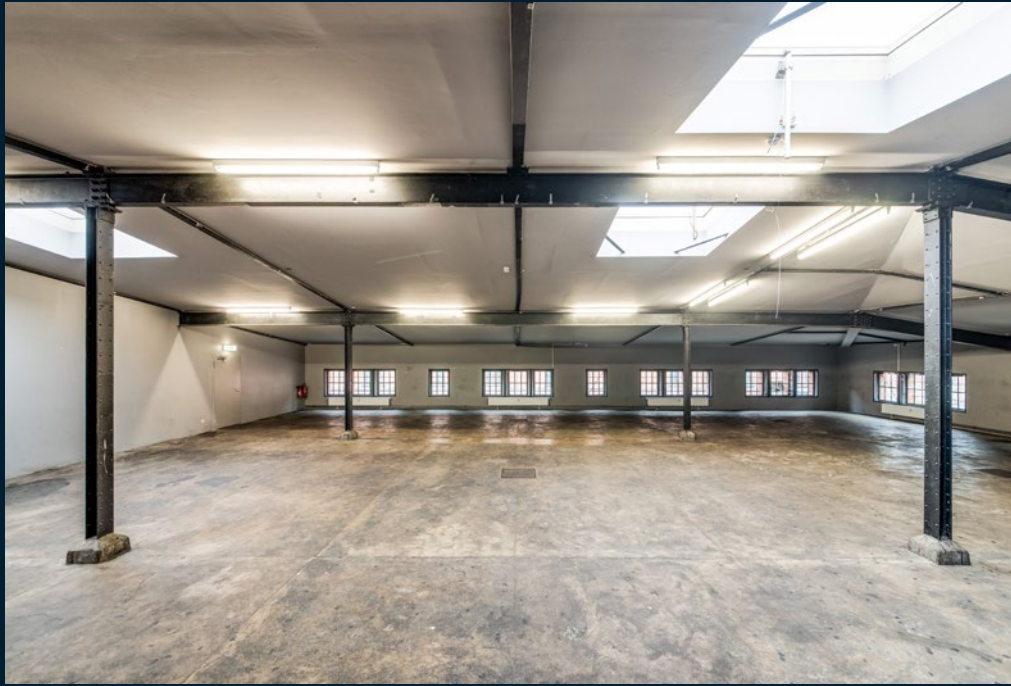




- › **AREA:** 370 m² | additional 80 m² adjoining spaces
- › **HEIGHT:** 2,50 m to 3,80 m
- › **LOCATION:** upper floor in the 'Kachelhaus'
- › **GABLED ROOF** with steel beams and insulation
- › **IDEAL FOR:** work functions, workshops, presentations, conferences
- › **CAPACITY:** up to 200 people, 200 people in row seating, 200 people at table seating, 170 at banquet seating
- › **INFRASTRUCTURE:** 25 m² cloakroom, 7,5 m bar, modern heating system, option to block out light, 55 m² restrooms, close to elevator, Wi-Fi
- › **TECHNICAL EQUIPMENT:** basic audio and lighting systems, details and prices available on request
- › **RECOMMENDATION:** booking in combination with the outdoor 'Sonnendeck' or the 'Studio'



The 'Speicher', located on the top floor of the 'Kachelhaus', is the second largest space in this multifunctional event location, and has a remarkably rustic ambience. Concrete flooring and steel beams provide plenty of industrial charm. Its window façades and skylights add just the right ambient lighting to match.







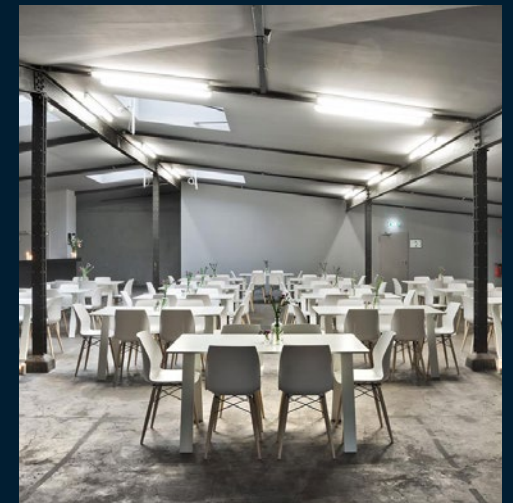
© Berlin's Unique Gin Festival



© Berlin's Unique Gin Festival



© Engagement Global / Frederik Schramm







© Offenblen.de / Awin

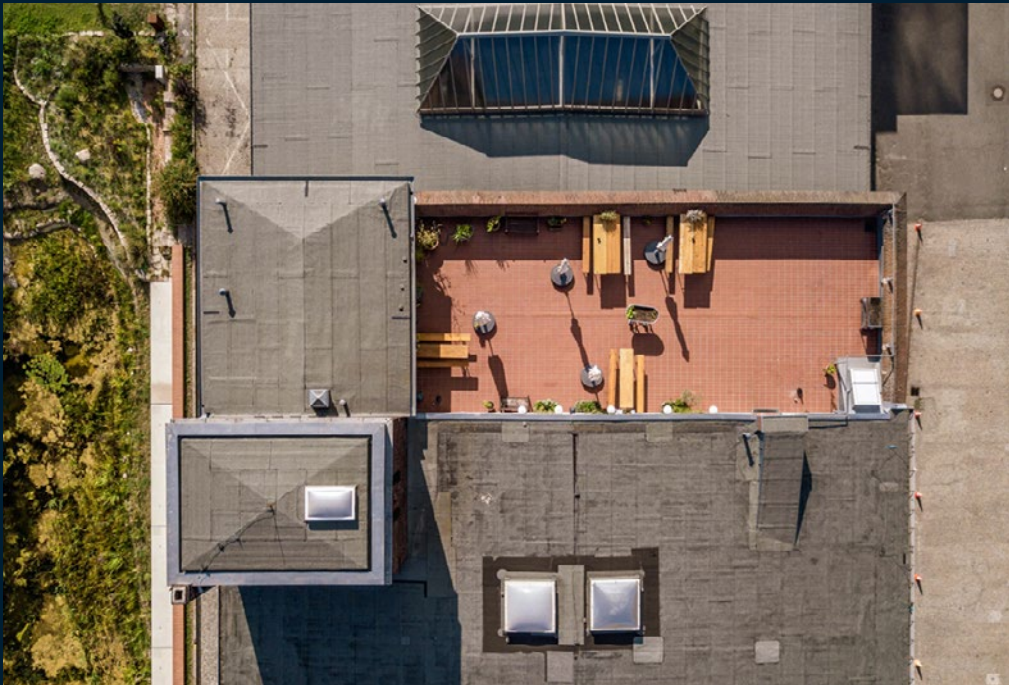


© Offenblen.de / Awin



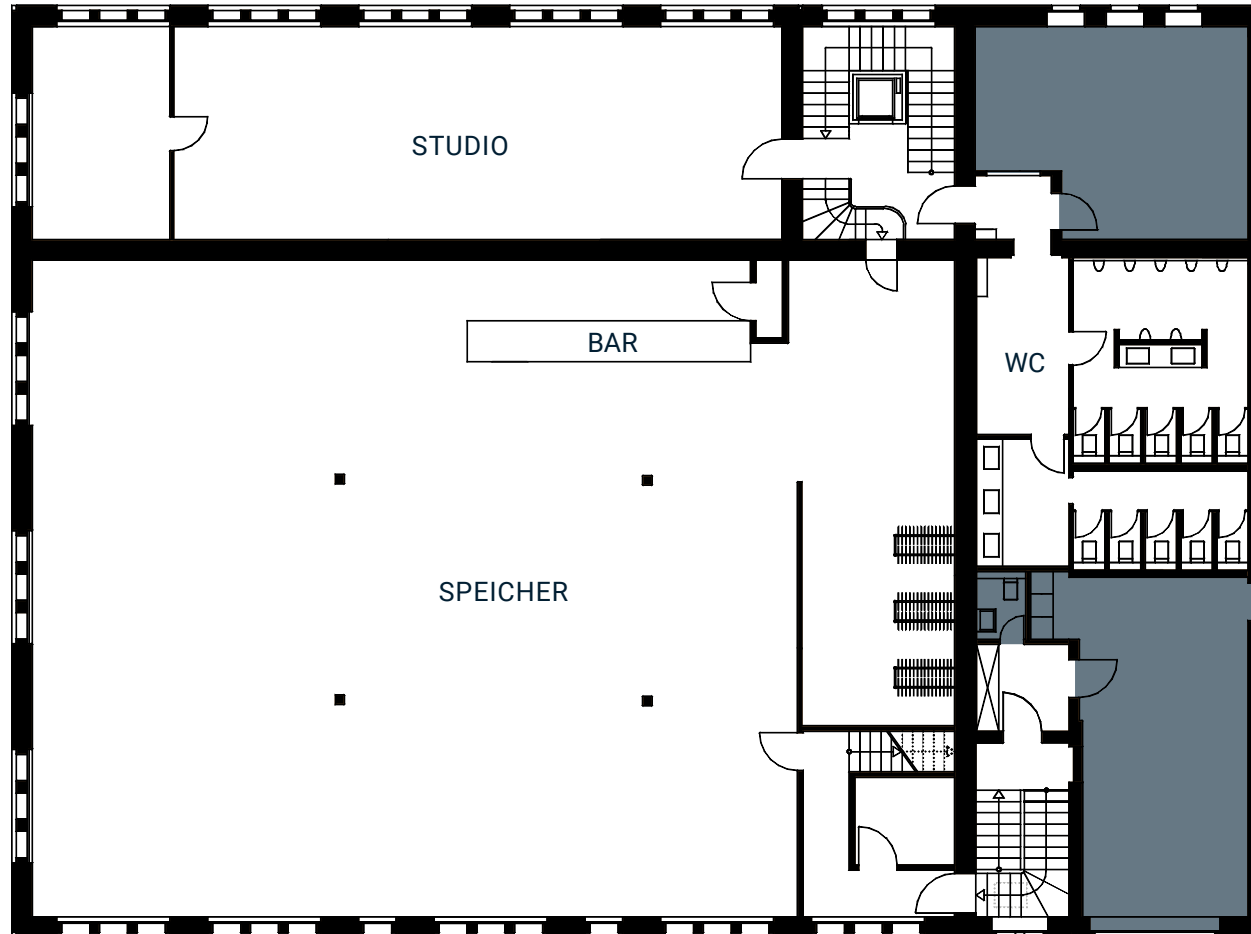
© 2019 Gene Glover / Agentur Focus





SPEICHER

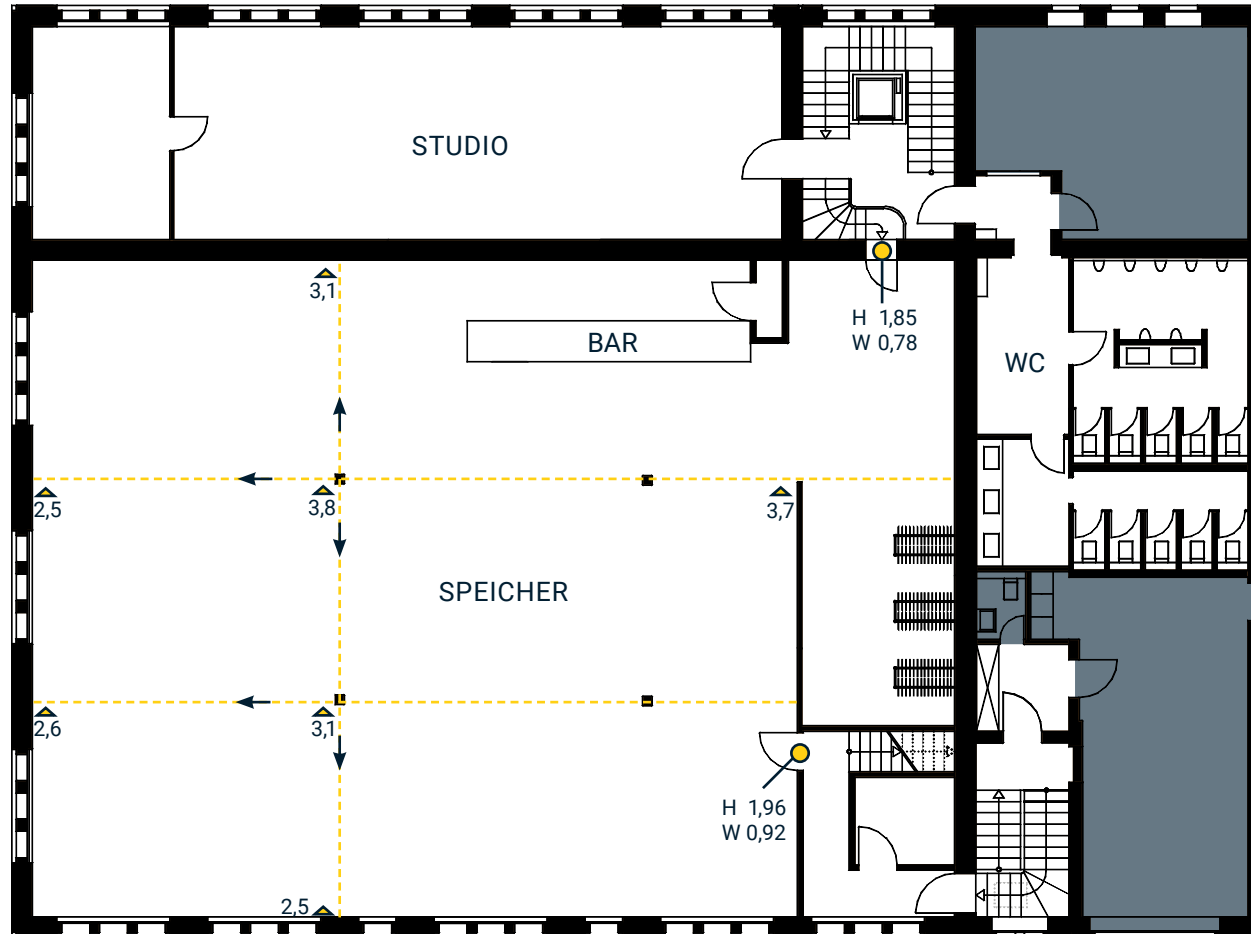
- › AREA: 370 m² | 80 m² adjoining spaces
- › HEIGHT: 2,50 m to 3,80 m
- › LOCATION: upper floor in the 'Kachelhaus'



SCALE: 1:200

SPEICHER

- › AREA: 370 m² | 80 m² adjoining spaces
- › HEIGHT: 2,50 m to 3,80 m
- › LOCATION: upper floor in the 'Kachelhaus'



SCALE: 1:200

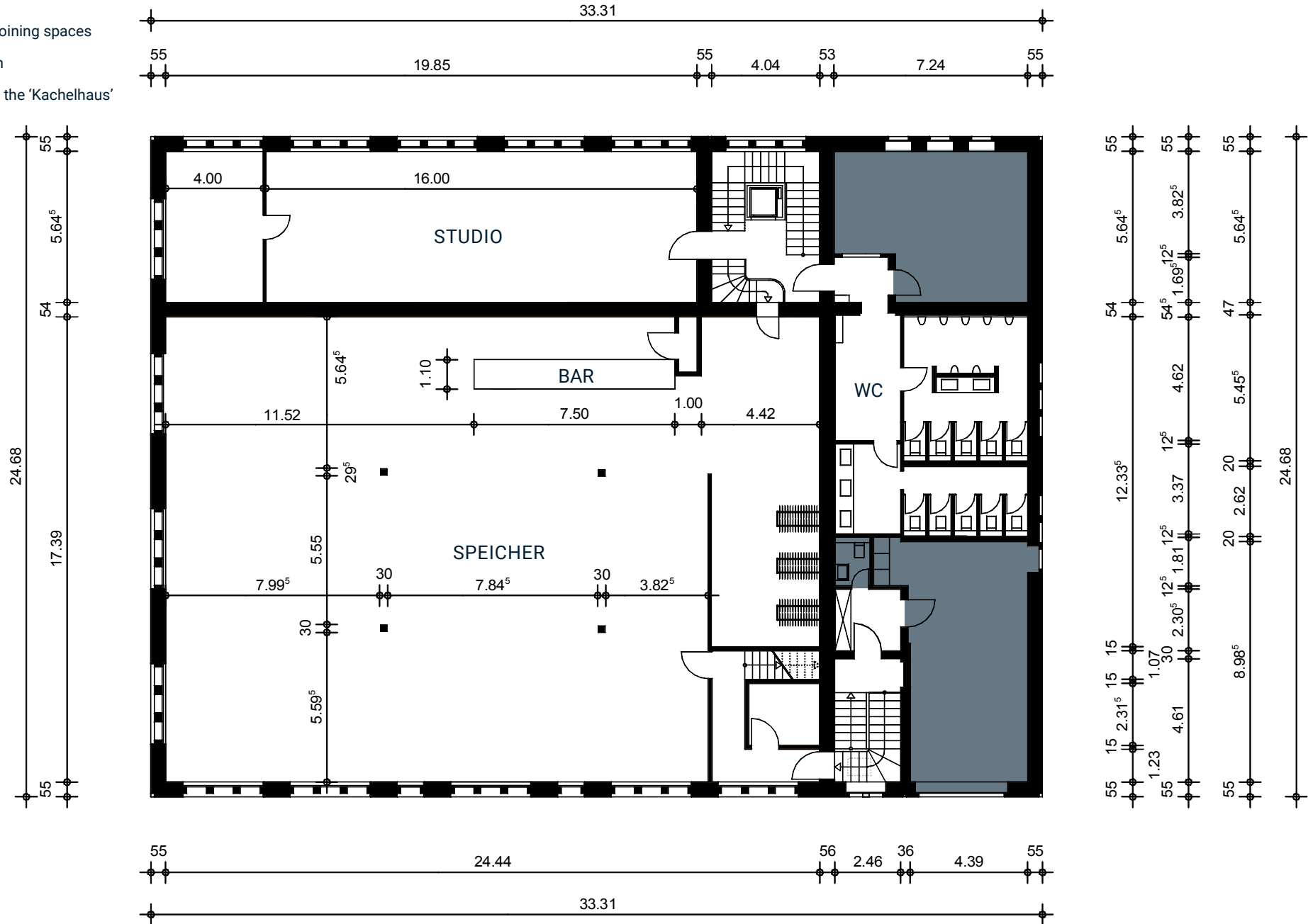
▲ ceiling height

● door frame

--- bend of the ceiling

SPEICHER

- › AREA: 370 m² | 80 m² adjoining spaces
- › HEIGHT: 2,50 m to 3,80 m
- › LOCATION: upper floor in the 'Kachelhaus'



SCALE: 1:200

SPEICHER

- › AREA: 370 m² | 80 m² adjoining spaces
- › HEIGHT: 2,50 m to 3,80 m
- › LOCATION: upper floor in the 'Kachelhaus'

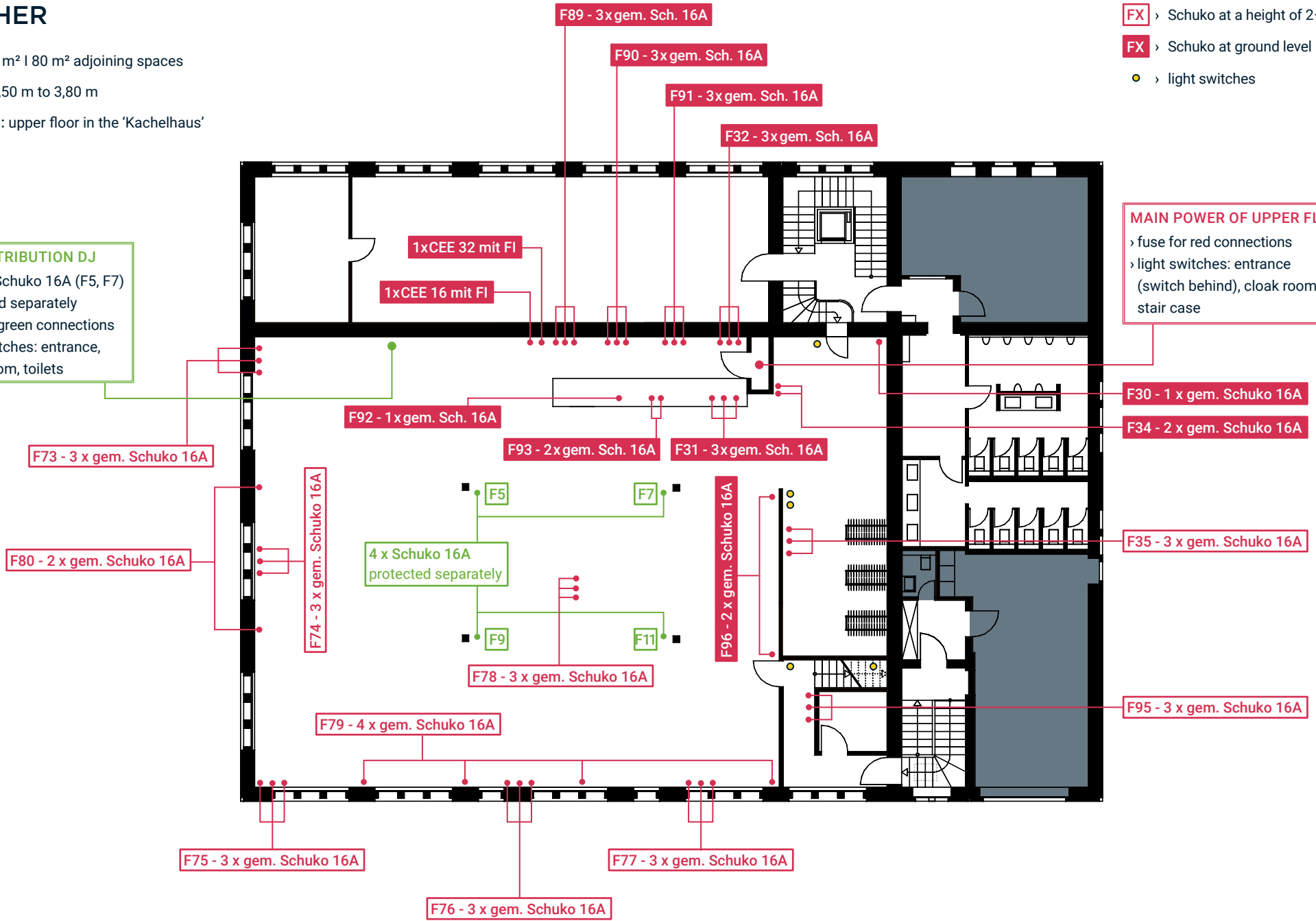
- FX** › Schuko at a height of 2–3 m
- FX** › Schuko at ground level
- › light switches

SUB-DISTRIBUTION DJ

- › incl. 2x Schuko 16A (F5, F7) protected separately
- › fuse for green connections
- › light switches: entrance, cloak room, toilets

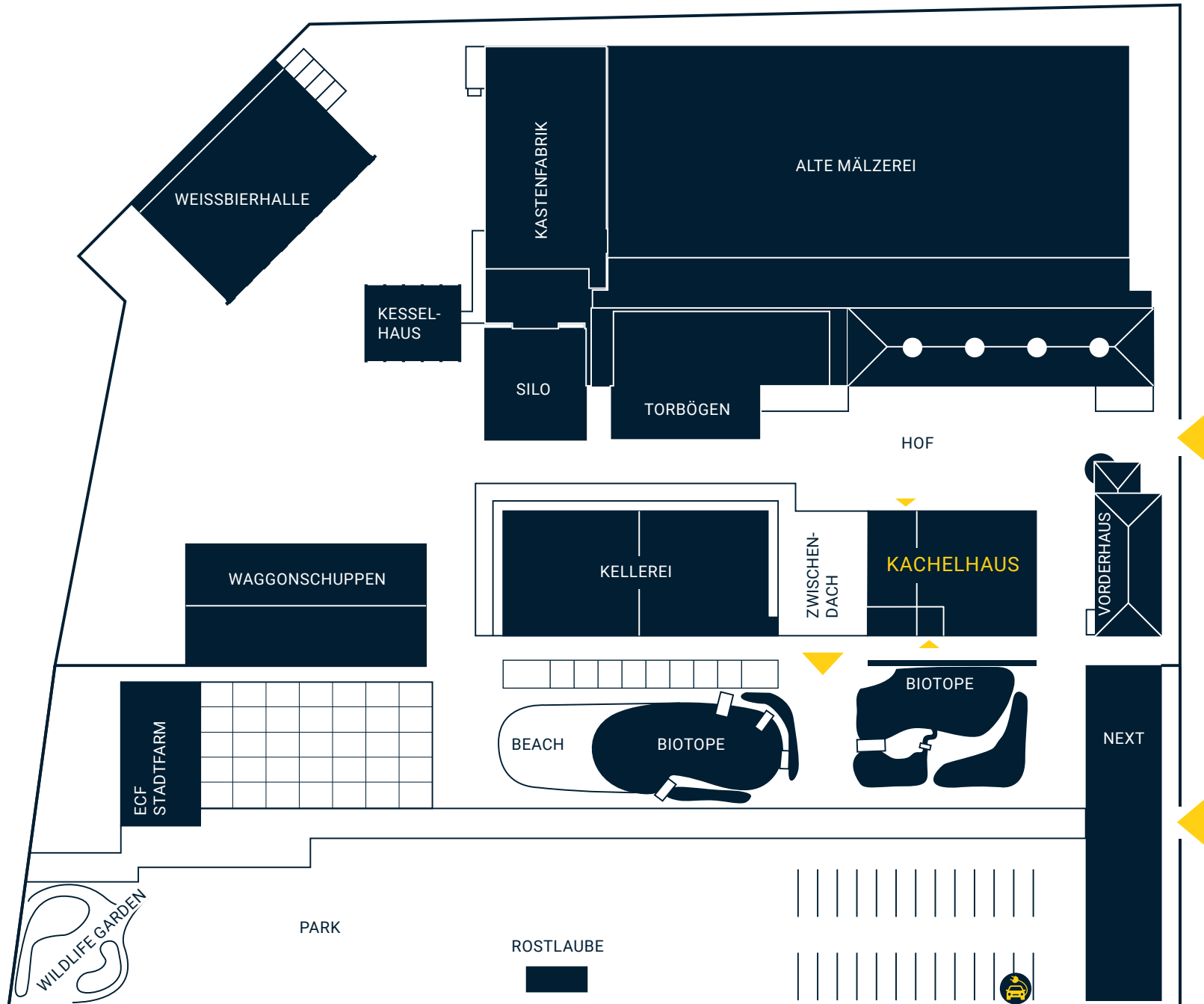
MAIN POWER OF UPPER FLOOR:

- › fuse for red connections
- › light switches: entrance (switch behind), cloak room, stair case



SCALE: 1:200

GROUND VIEW



KACHELHAUS

- ▶ Speicher ↗
- › Maschinenhalle ↗
- › Studio ↗
- › Lichtkeller ↗
- › Tankraum ↗
- › Sonnendeck ↗

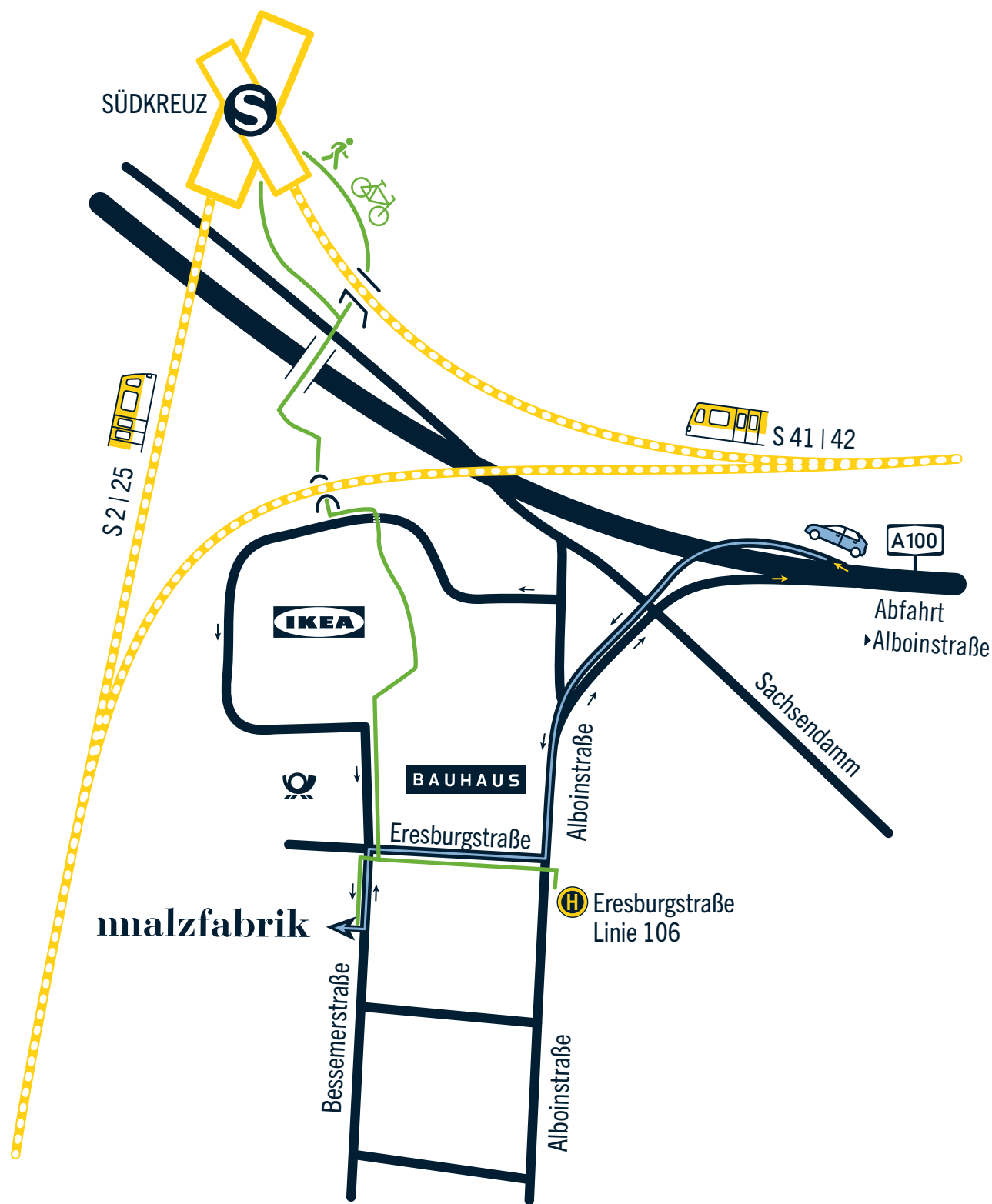
ALTE MÄLZEREI

- › Special Rooms ↗
- › Halls ↗
- › Stair Cases ↗
- › Hallways ↗

OUTDOORS

- › Park ↗
- › Rostlaube ↗
- › Hof ↗
- › Zwischendach ↗
- › Torbögen ↗

APPROACH



- 📍 Bessemerstr. 2-14
12103 Berlin
- ☎ +49 30 755 17 125
- 🌐 malzfabrik-event.de
- ✉ location@malzfabrik.de



MALZFABRIK EVENT



Bessemerstr. 2-14
12103 Berlin



+49 30 755 17 125



malzfabrik-event.de



location@malzfabrik.de