

# LAYOUTS OF THE EVENT LOCATIONS

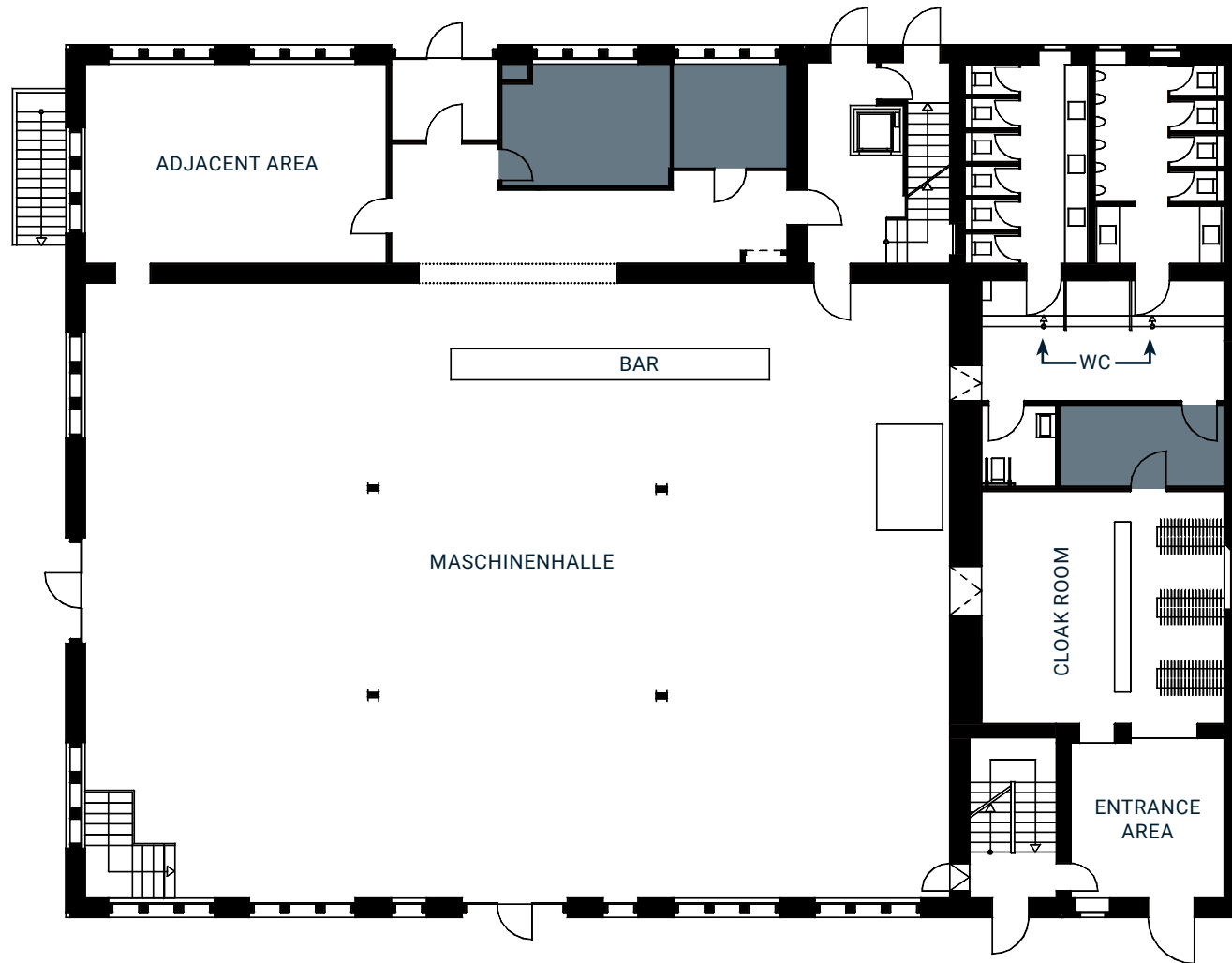


MALZFABRIK EVENT

+49 30 755 17 125 • [location@malzfabrik.de](mailto:location@malzfabrik.de)

# MASCHINENHALLE

- › SPACE: 425 m<sup>2</sup>,  
add. 210 m<sup>2</sup> adjacent area
- › HEIGHT: 5,60 m – 6,40 m
- › LOCATION: ground floor of the  
,Kachelhaus', barrier free



SCALE: 1:200

# MASCHINENHALLE

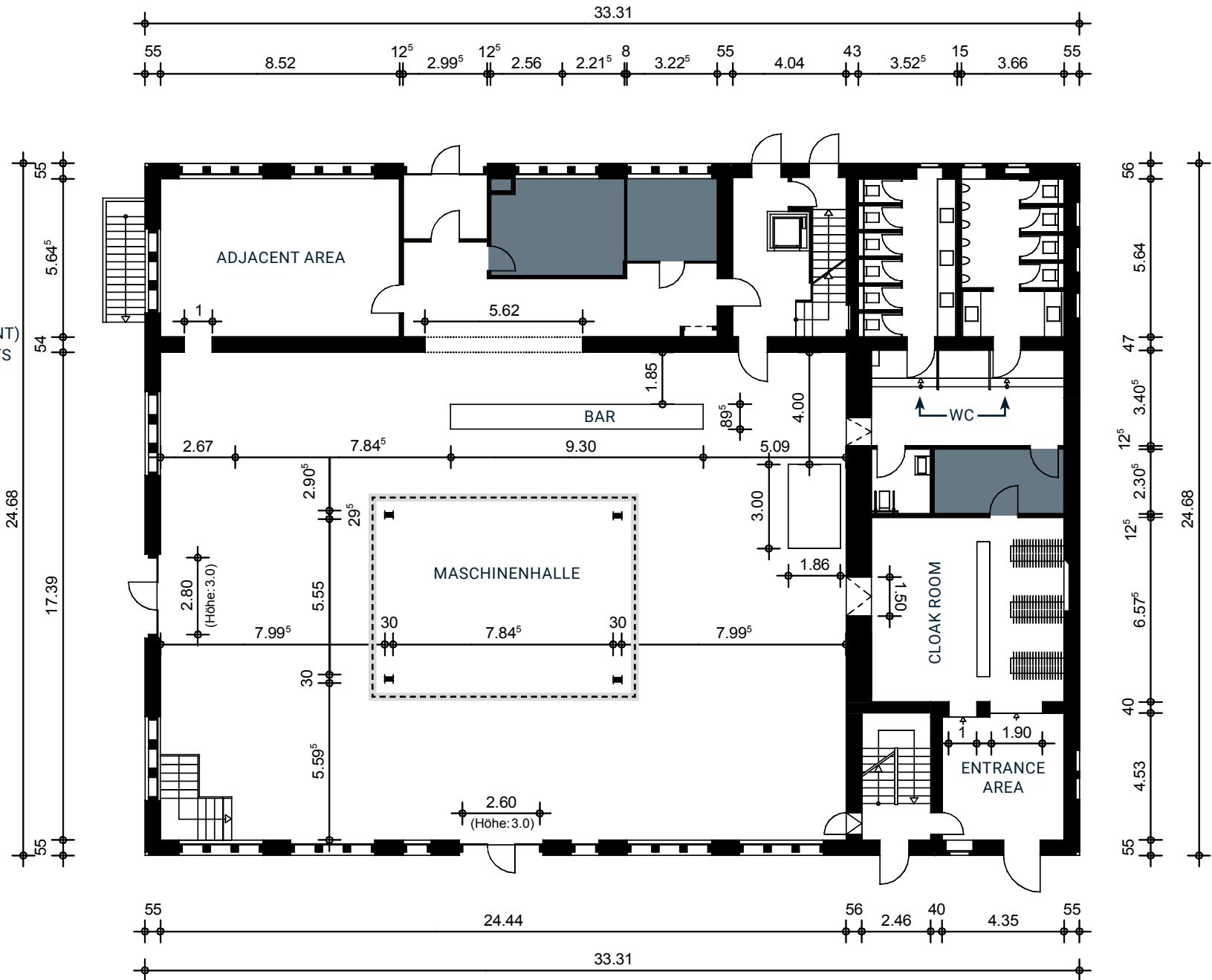
› SPACE: 425 m<sup>2</sup>,  
add. 210 m<sup>2</sup> adjacent area

› HEIGHT: 5,60 m – 6,40 m

› LOCATION: ground floor of the  
,Kachelhaus', barrier free

--- TRVERSE  
GLOBALTRUSS F34P-B (4-POINT)  
WITH CONNECTION ELEMENTS  
(CORNER BLOCS) F34BOXP

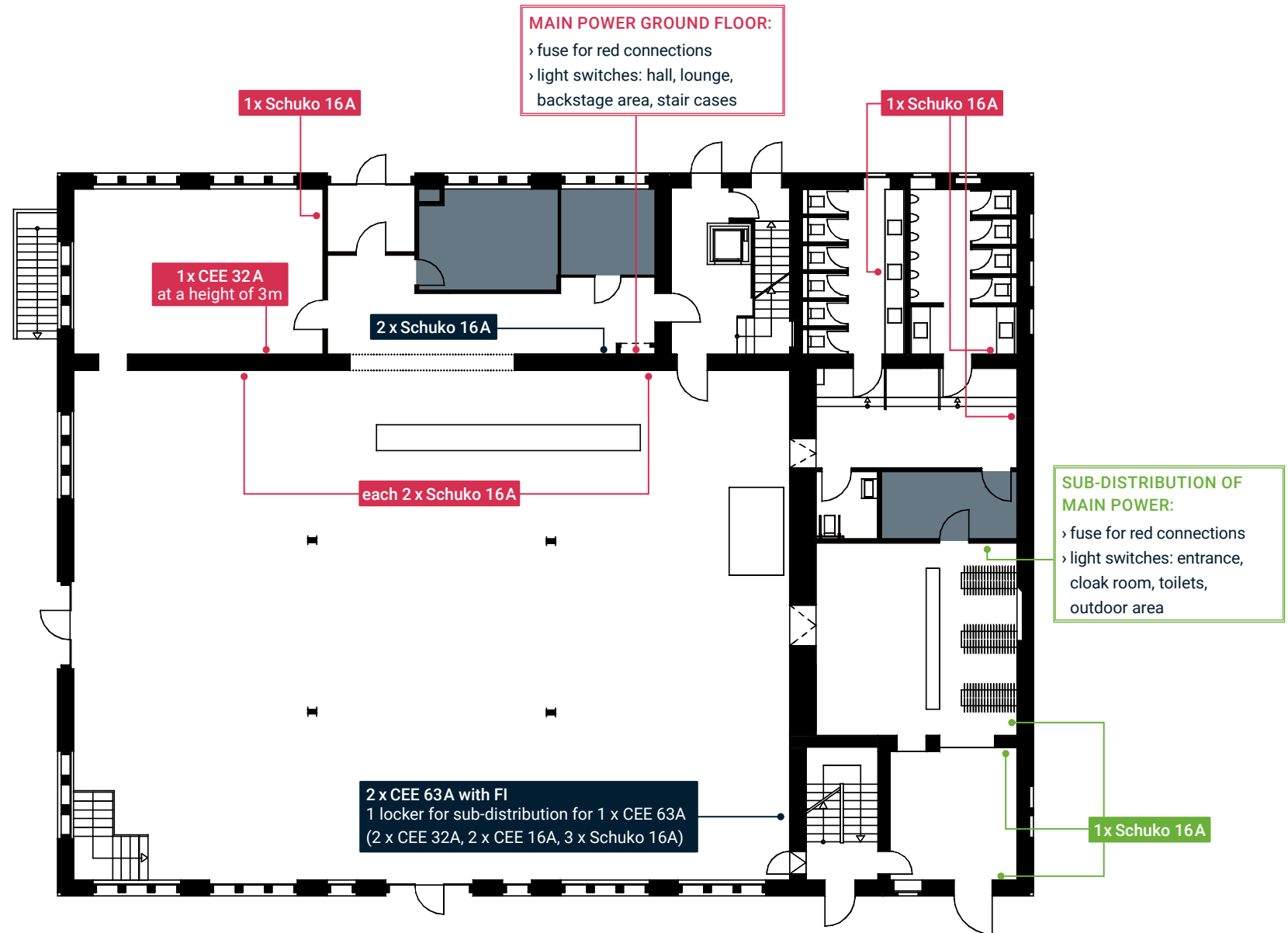
› OUTER MEASURES :  
11,14 M X 8,14 M X 0,29 M



SCALE: 1:200

# MASCHINENHALLE

- › SPACE: 425 m<sup>2</sup>,  
add. 210 m<sup>2</sup> adjacent area
- › HEIGHT: 5,60 m – 6,40 m
- › LOCATION: ground floor of the  
,Kachelhaus', barrier free



# TECHNICAL EQUIPMENT

## ▶ SOUND SYSTEM

### QSC K8 ACTIVE SPEAKERS

- › 4 x speaker 8", radiation angle: 105°, for general acoustic irradiation in the hall

### MOBILES BESCHALLUNGSSYSTEM RCF EVOX 8

- › 2 x 8 x 2" full range sound system with 12" subwoofer, including a spacer rod to the front amplifiers for stage setups, and primary amplifiers for dance floors setups.
- › The system can be rearranged to fit any purpose thanks to its Cat connection, and can support most normal types of events.

## ▶ SOUND ENGINEERING

### M32R DIGITAL MIXING DESK

- › can be remotely controlled via PC or touchpad using WI-FI connection;
- › played on 2 x wall speakers with Cat offset and a SD16 digital stage box

### BEYERDYNAMIC OPUS 600 CORDLESS FOR SPEAKING

- › with the SDM 369 compact transmitter (supercardioid)

## ▶ TRUSS

### CENTRAL 4-POINT F34PL TRUSSING SYSTEM

- › black
- › non-movable
- › height of lowest chords approx. 5m
- › the outer chord measures 11.10m x 8.10m

## ▶ LIGHTING SYSTEM

### FRESNEL LENS SPOTLIGHTS

- › 6 x ADB F101, 1000 Watt spotlights / barn doors for lighting the window areas: the bar and stage positions A and B have two spotlights each

### DECORATIVE BEAM LIGHTING

- › 22 x LED RGBWW spot lights / 12 x 1W RGBA to light up the historic steel beams and machinery

### DECORATIVE WALL LIGHTING

- › 14 x LED AT10 mini floor spot lights / 7 x 10W RGBA to light up wall structures

### DECORATIVE BAR LIGHTING

- › 7 x original, historical EXLUX industry lights as a special lighting feature in the bar area
- › The lights are mounted to a system of live railings and fitted with 25 Watt opal dimmable lightbulbs, which can also be exchanged for other types.
- › It's possible to dim all lights at once, using a separate dimmer.

### COMPUTER-BASED LIGHTING CONTROLS / (SOUND CONTROLS)

- › control lighting with QLC+ lighting software
- › all lighting systems are controllable from FOH using a tablet or stationary PC.
- › You have the option to install external lighting commands at the DMX distributor (FOH).

### THE FOLLOWING GROUPS ARE EASILY AND INTUITIVELY CONTROLLED FOR NORMAL USE

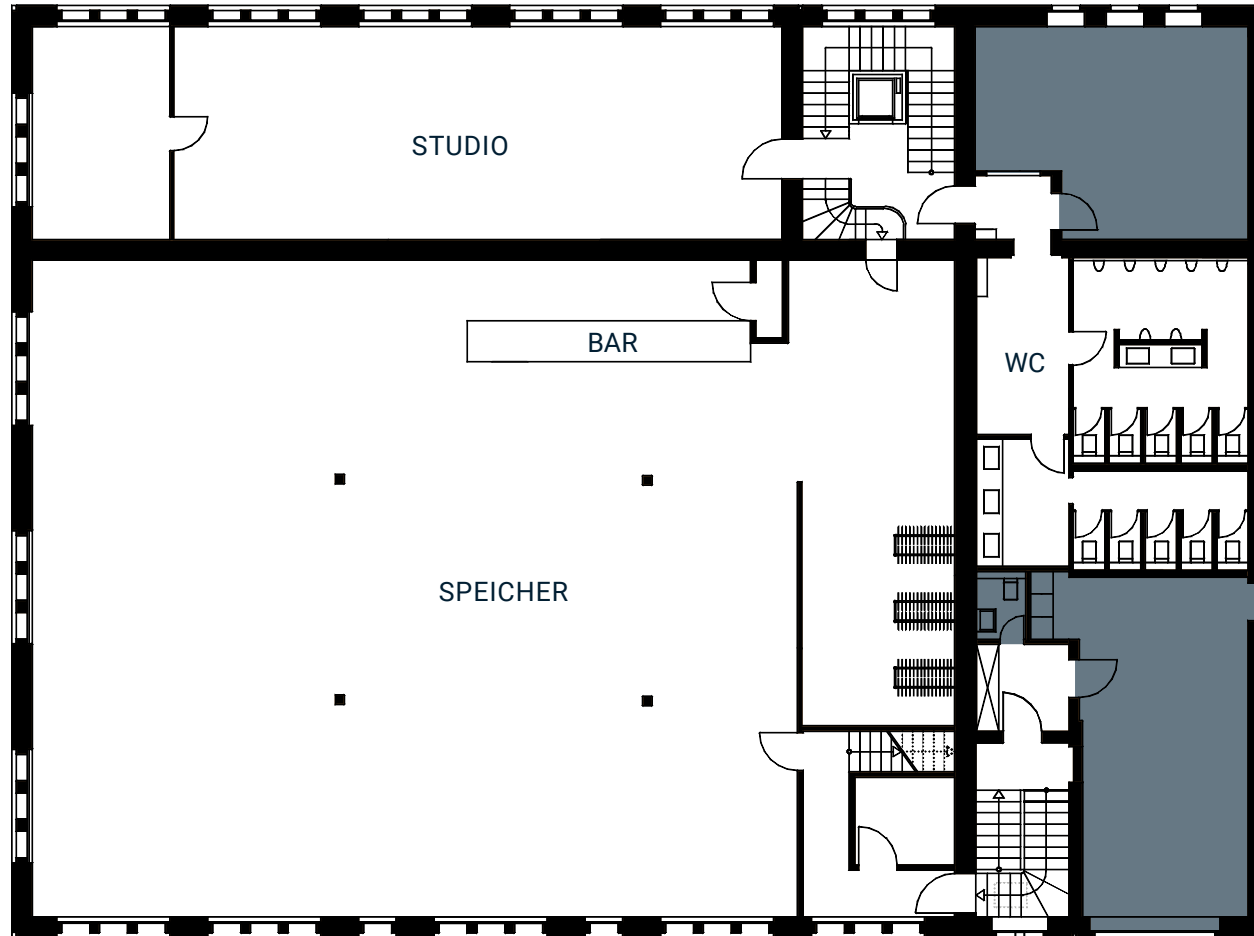
- › main control | controls all light and sound systems
- › 6 channel dimmer | Stage A, Stage B, Bar, Reserve, Reserve, Reserve
- › beam lighting | three groups with colour chase macros
- › wall lighting | one group with colour macros
- › sound regulation

### MOBILE BATTERY-POWERED LED FLOOR SPOTS

- › 8 x battery-powered LED ELED ALP 90 RGBAWUV to position anywhere indoors or outdoors e.g. in the entrance, façade, or to light up roll-up displays and objects
- › bulb life-spans range from 8 – 16 hours, depending on their colour and luminosity

# SPEICHER

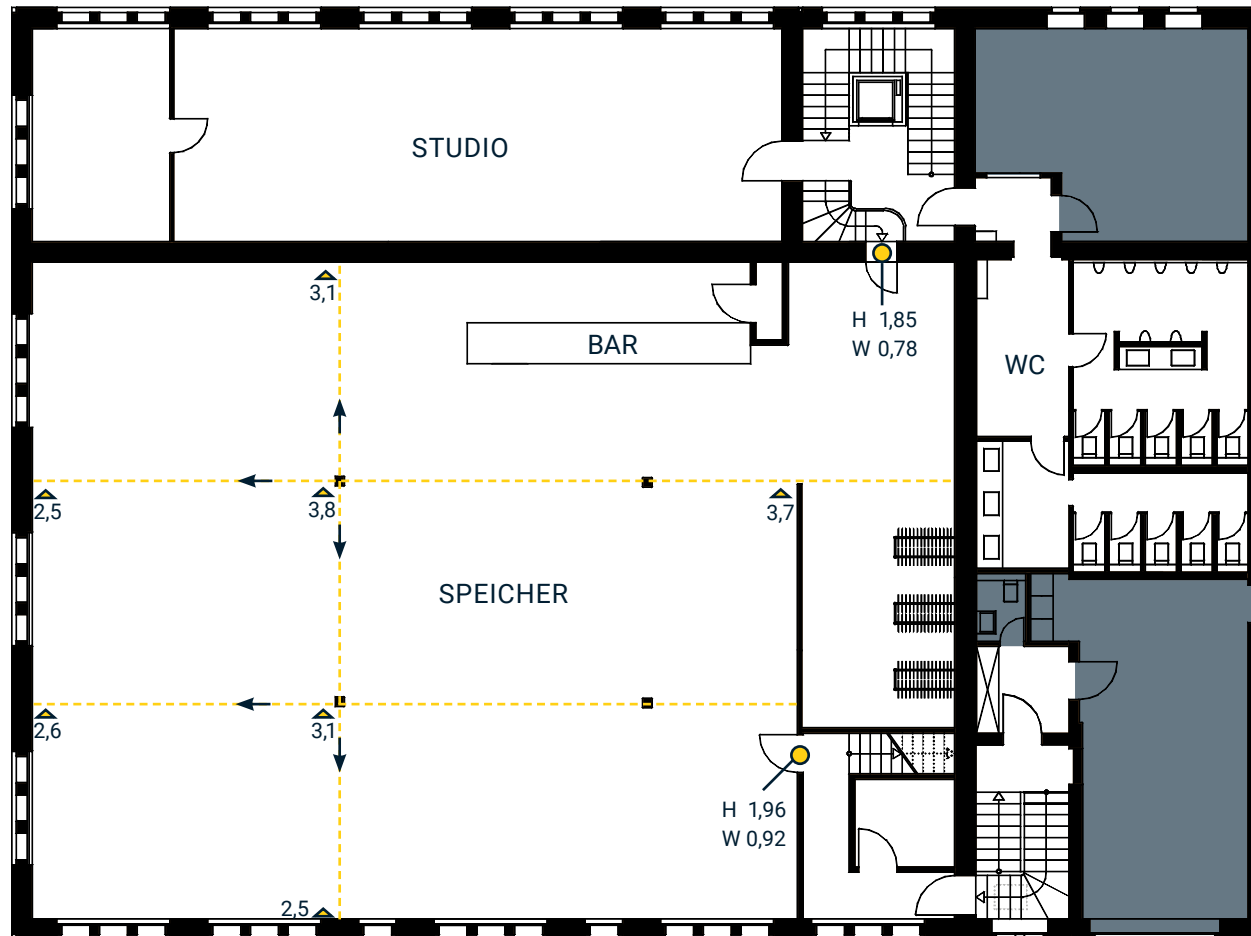
- › SPACE: 370 M<sup>2</sup> | ADD. 80 M<sup>2</sup> ADJACENT AREA
- › HEIGHT: 2,50 M – 3,80 M
- › LOCATION: UPPER FLOOR IN THE ‚KACHELHAUS‘



SCALE: 1:200

# SPEICHER

- › SPACE: 370 M<sup>2</sup> | ADD. 80 M<sup>2</sup> ADJACENT AREA
- › HEIGHT: 2,50 M – 3,80 M
- › LOCATION: UPPER FLOOR IN THE ‚KACHELHAUS‘



SCALE: 1:200

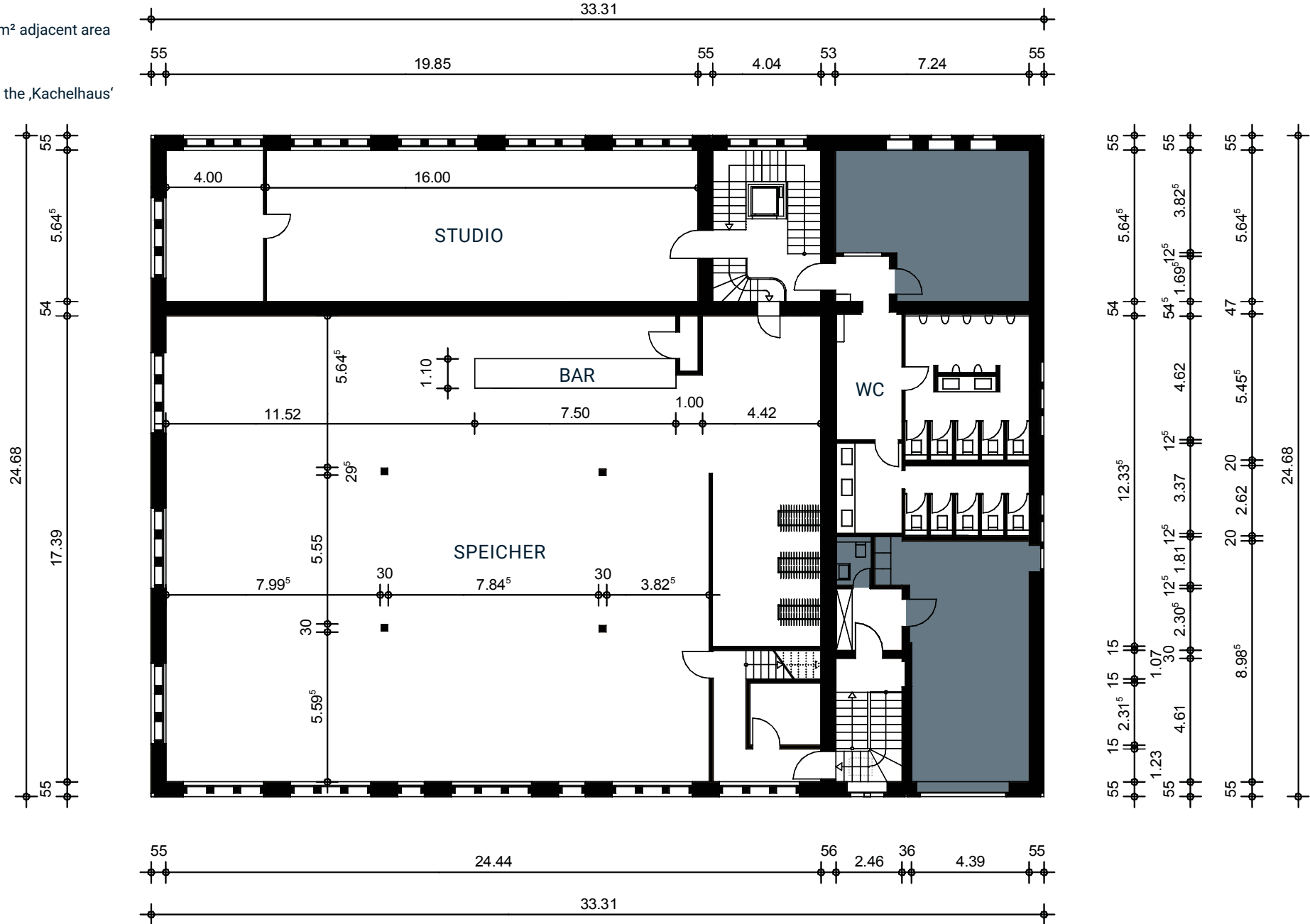
▲ ceiling height

● door frame

--- bend of the ceiling

# SPEICHER

- › SPACE: 370 m<sup>2</sup> | add. 80 m<sup>2</sup> adjacent area
- › HEIGHT: 2,50 m – 3,80 m
- › LOCATION: upper floor in the ‚Kachelhaus‘



SCALE: 1:200



# SPEICHER

- › SPACE: 370 m<sup>2</sup> | add. 80 m<sup>2</sup> adjacent area
- › HEIGHT: 2,50 m – 3,80 m
- › LOCATION: upper floor in the ‚Kachelhaus‘

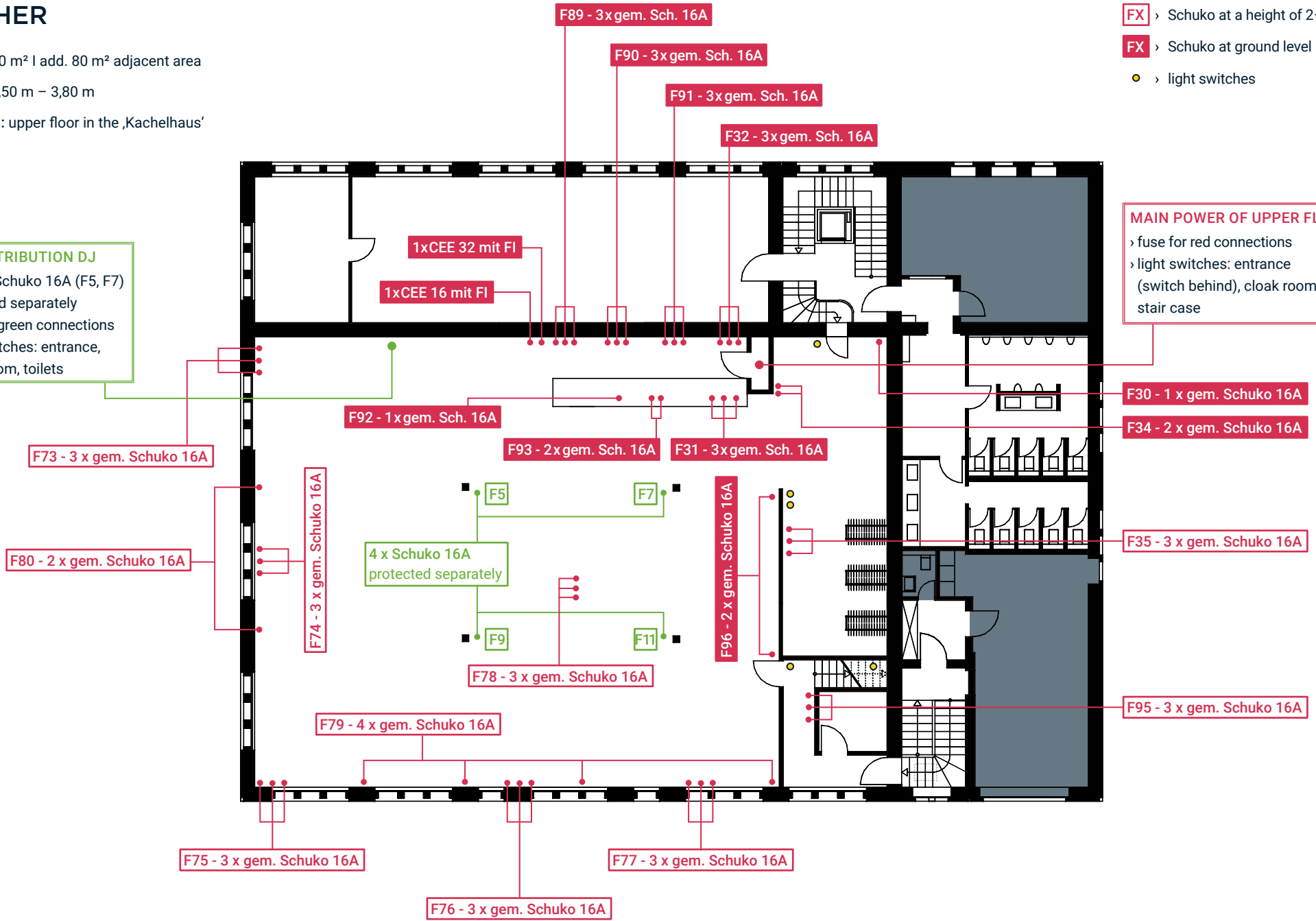
- FX** › Schuko at a height of 2–3 m
- FX** › Schuko at ground level
- › light switches

**SUB-DISTRIBUTION DJ**

- › incl. 2x Schuko 16A (F5, F7) protected separately
- › fuse for green connections
- › light switches: entrance, cloak room, toilets

**MAIN POWER OF UPPER FLOOR:**

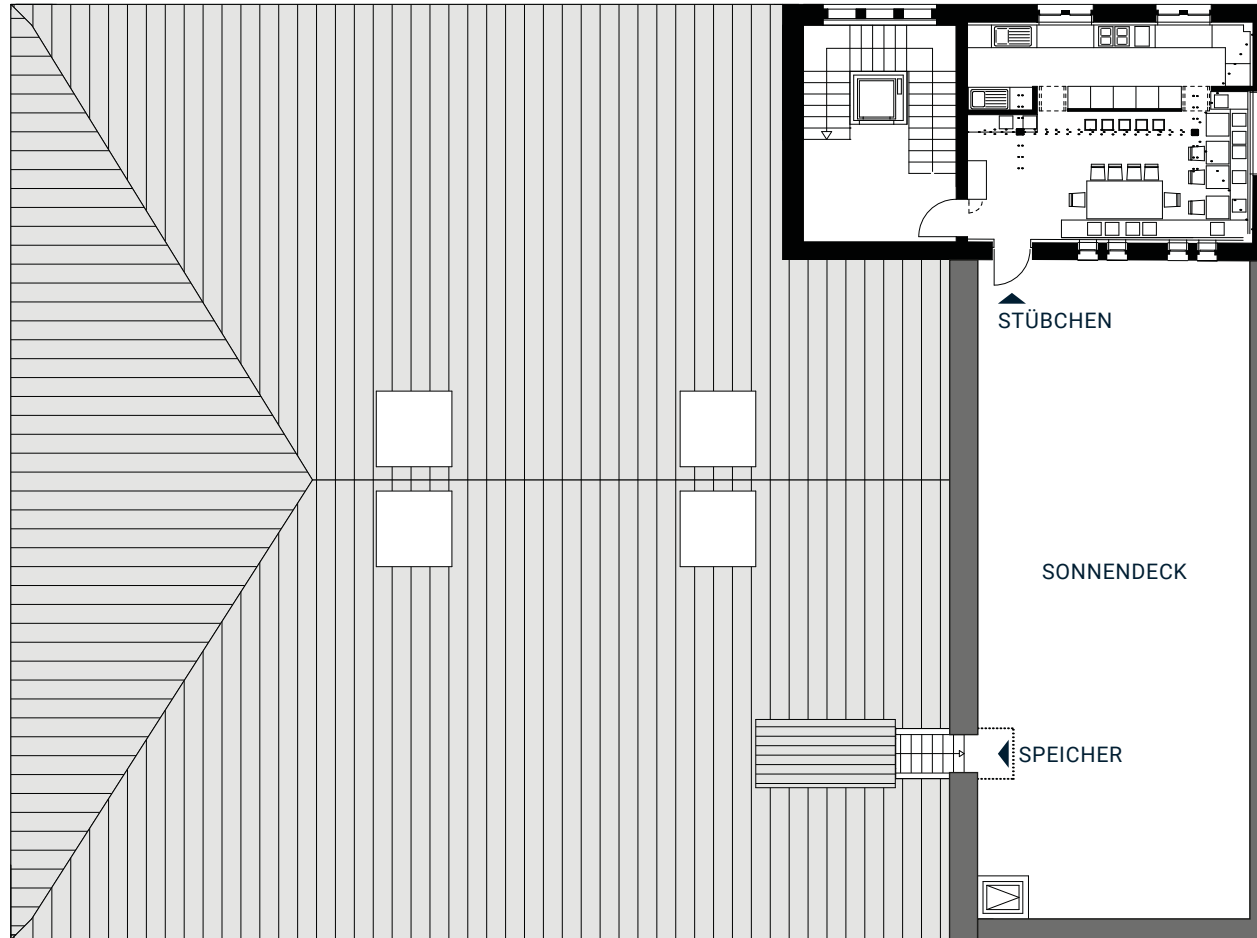
- › fuse for red connections
- › light switches: entrance (switch behind), cloak room, stair case



SCALE: 1:200

# SONNENDECK

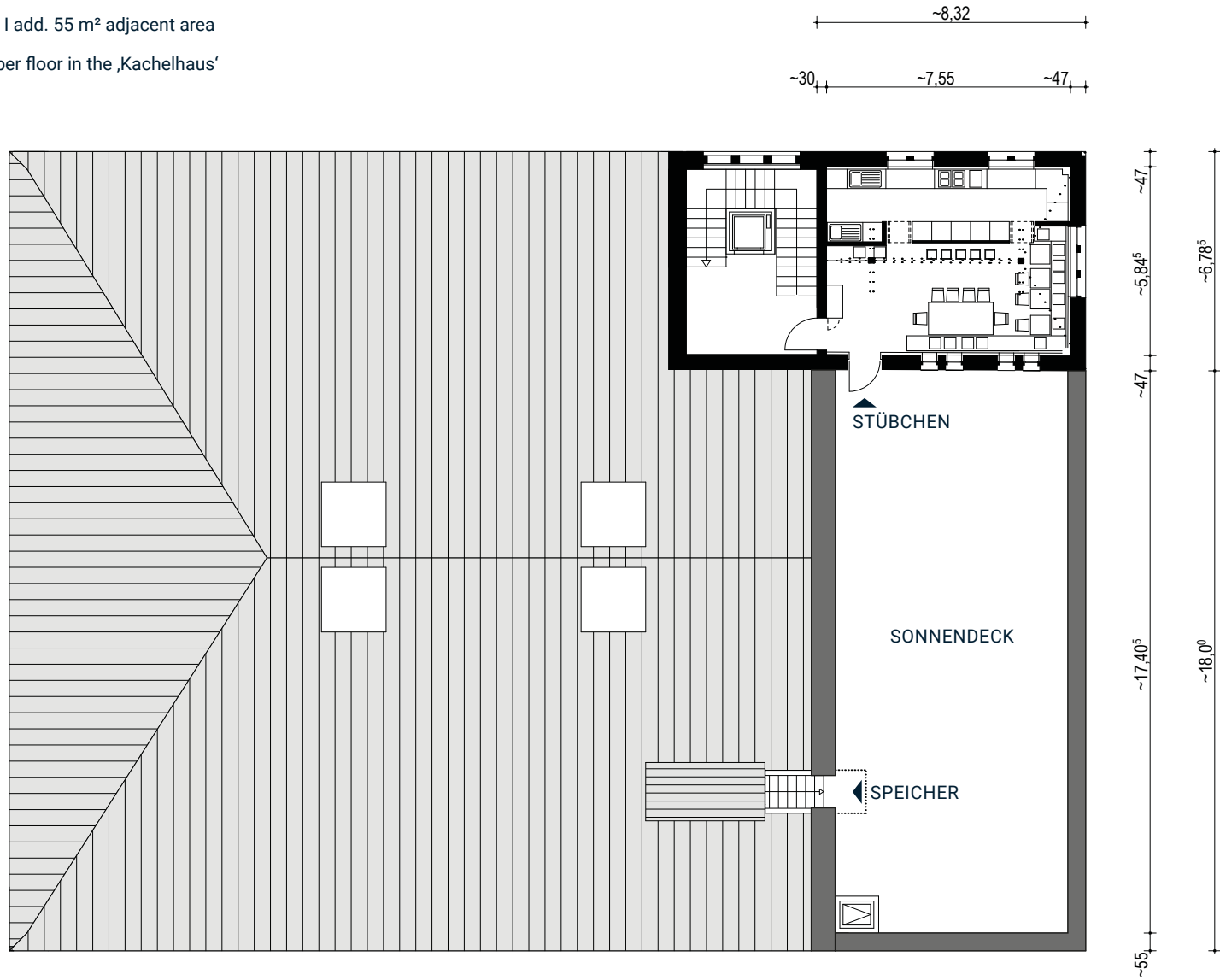
- › SPACE: 130 m<sup>2</sup> | add. 55 m<sup>2</sup> adjacent area
- › LOCATION: upper floor in the ‚Kachelhaus‘



SCALE: 1:200

# SONNENDECK

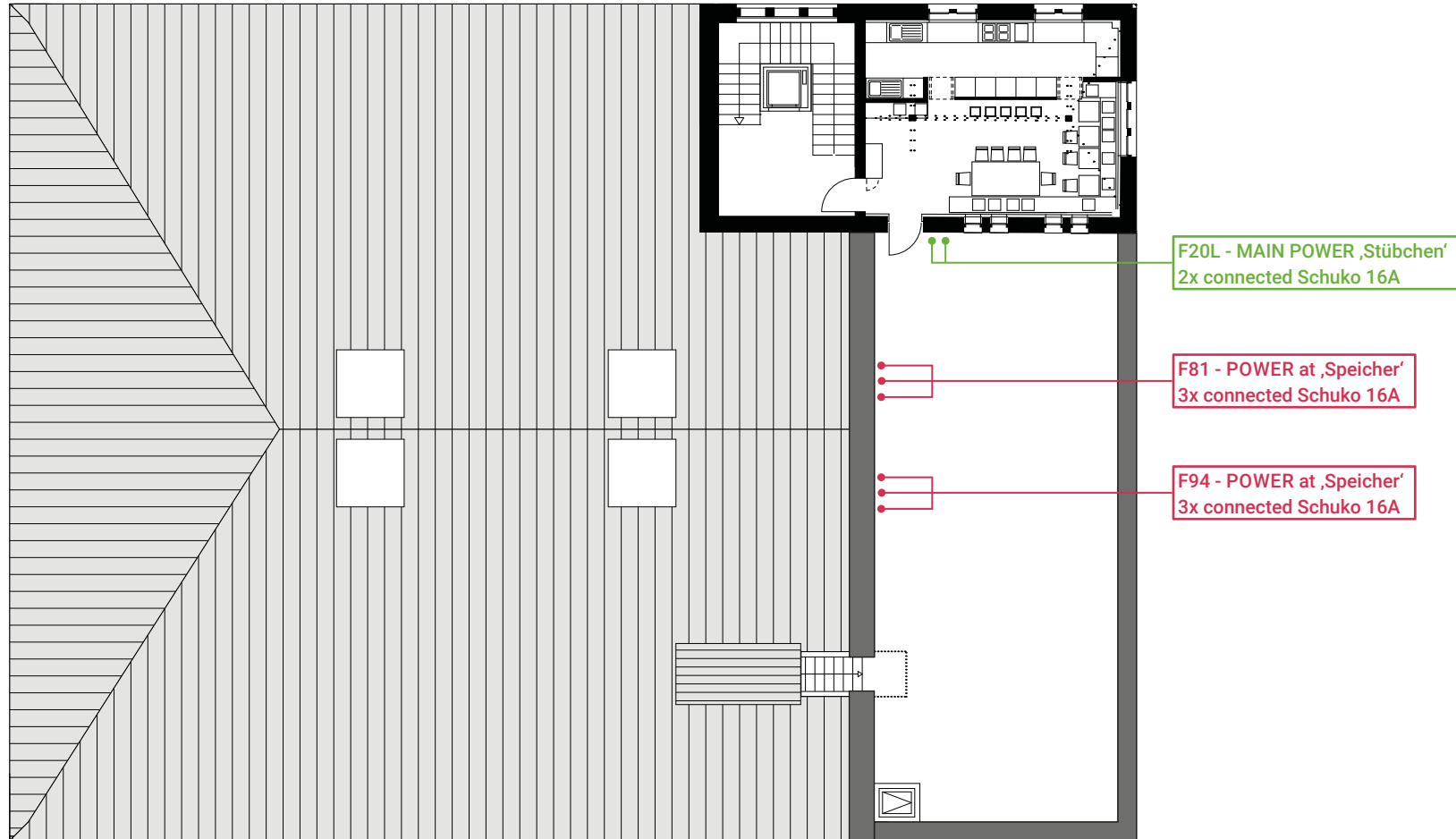
- › SPACE: 130 m<sup>2</sup> | add. 55 m<sup>2</sup> adjacent area
- › LOCATION: upper floor in the ‚Kachelhaus‘



SCALE: 1:200

# SONNENDECK

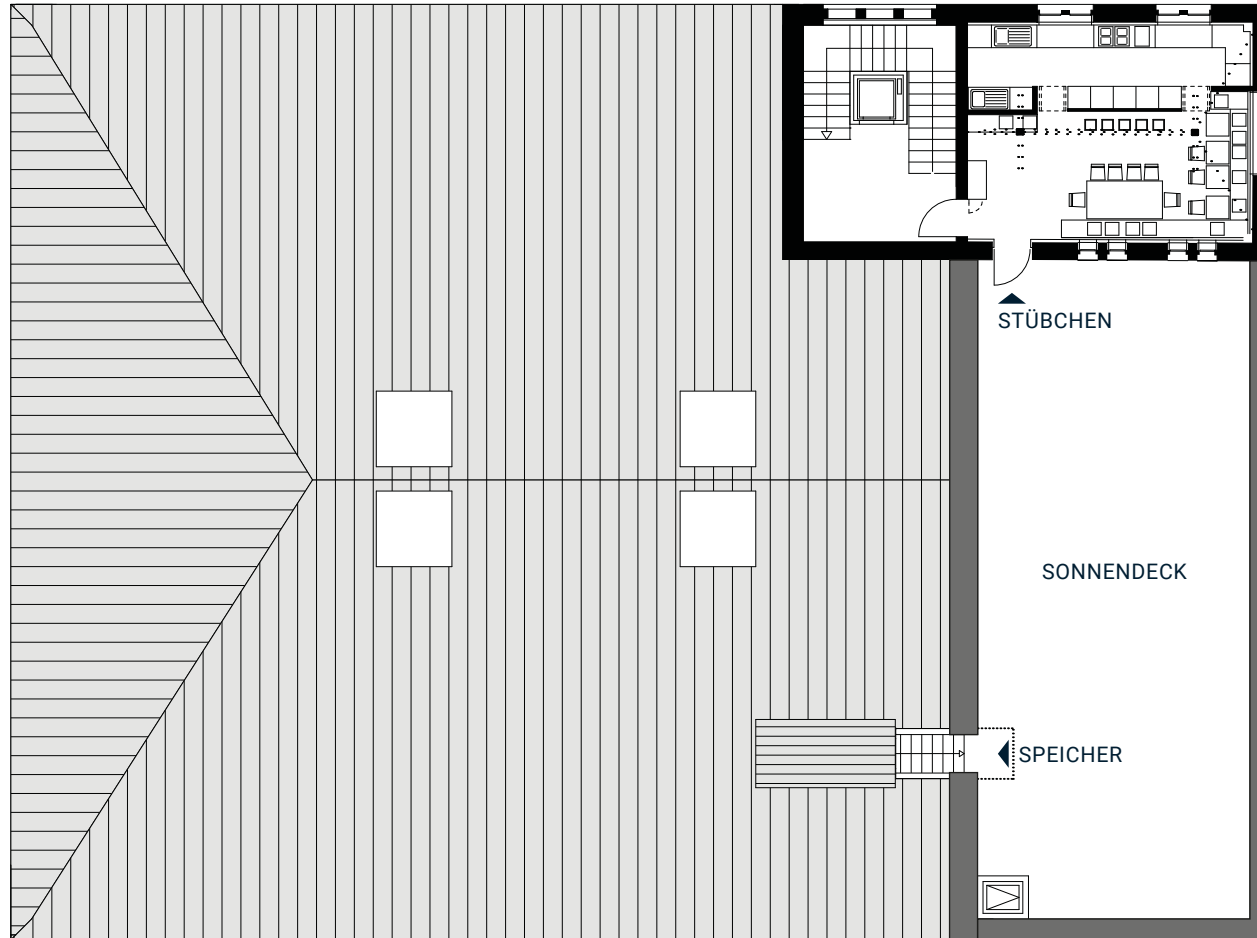
- › SPACE: 130 m<sup>2</sup> | add. 55 m<sup>2</sup> adjacent area
- › LOCATION: upper floor in the ‚Kachelhaus‘



SCALE: 1:200

# STÜBCHEN

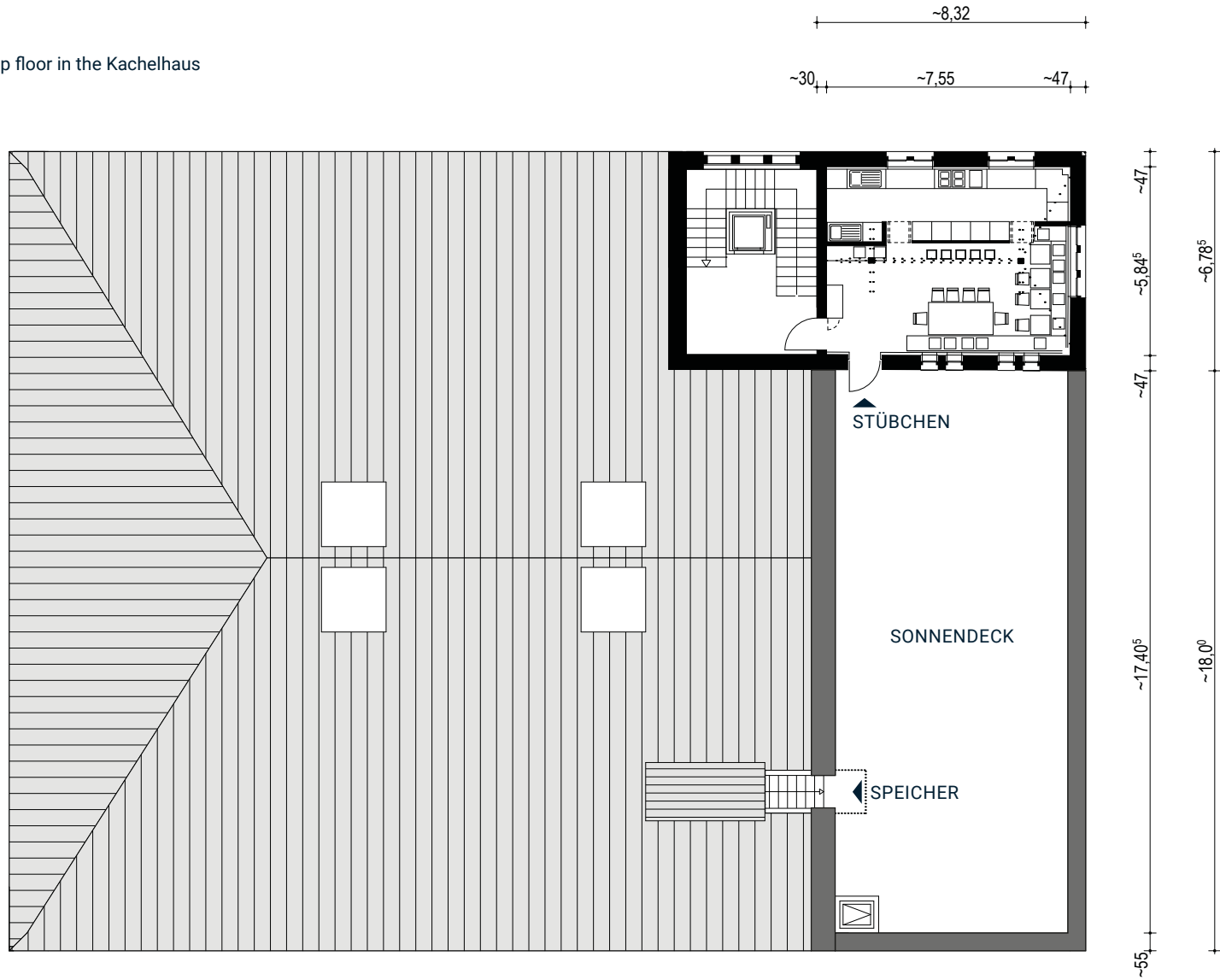
- › AREA: 45 m<sup>2</sup>
- › SITUATION: Top floor in the Kachelhaus



SCALE: 1:200

# STÜBCHEN

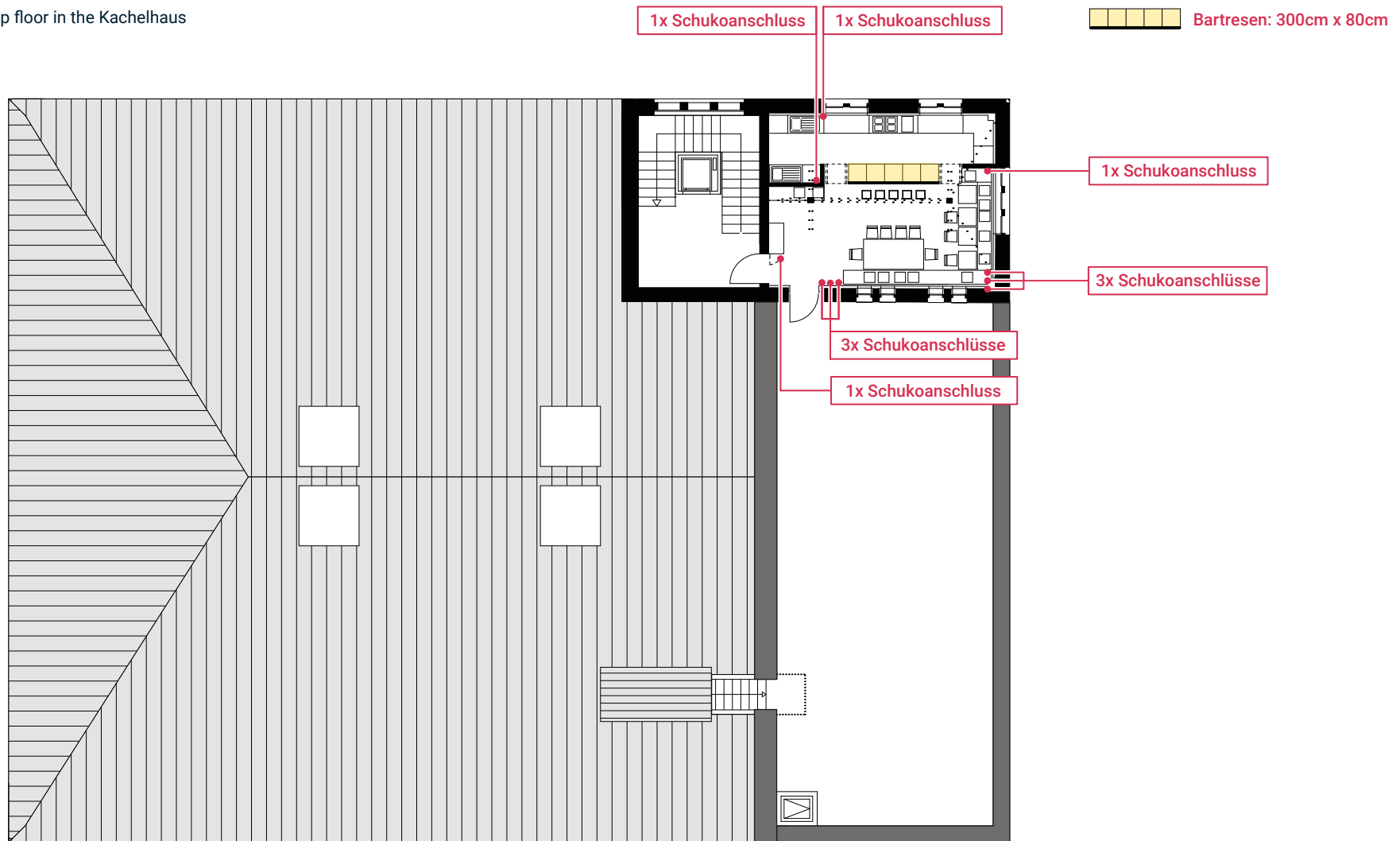
- › AREA: 45 m<sup>2</sup>
- › SITUATION: Top floor in the Kachelhaus



SCALE: 1:200

# STÜBCHEN

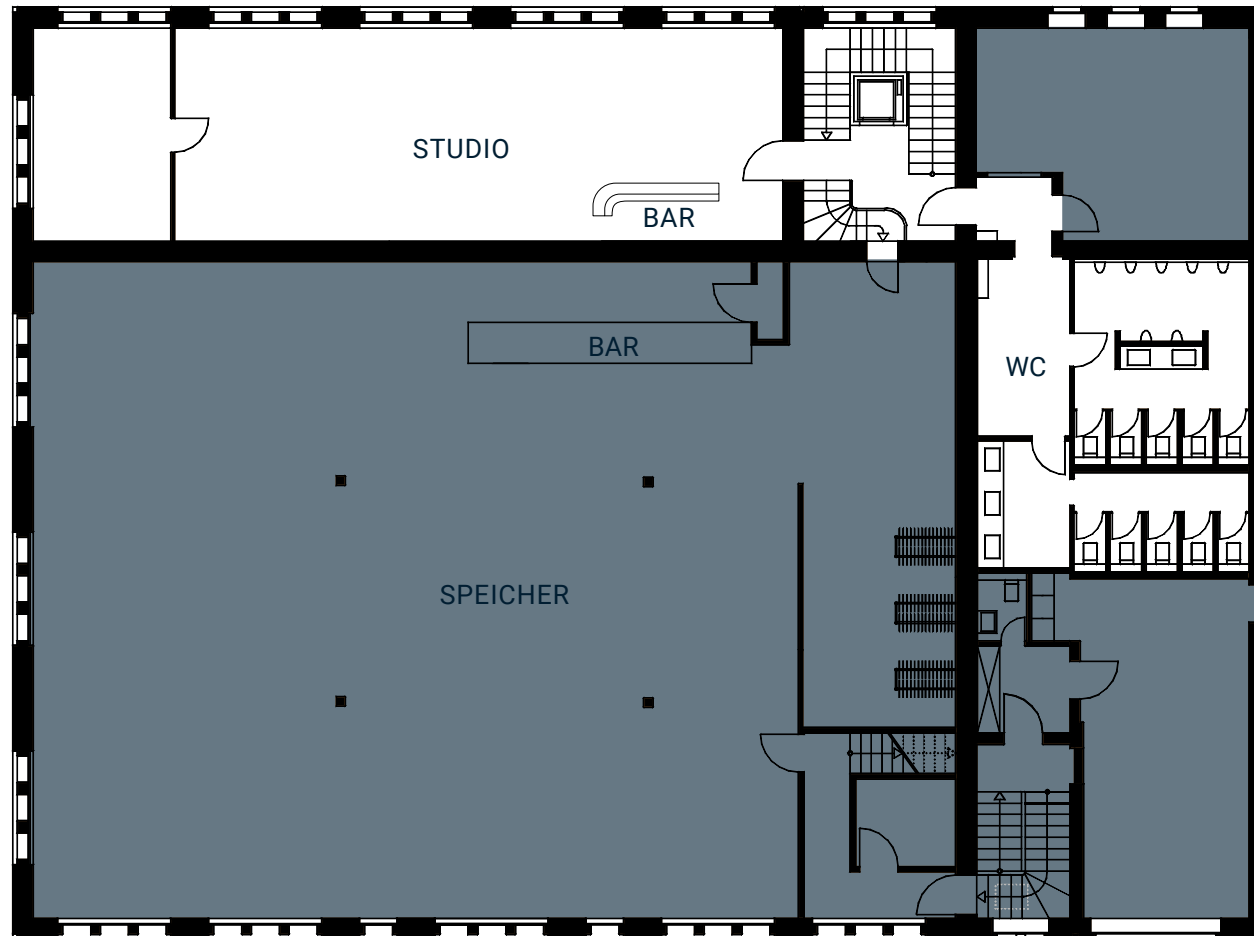
- › AREA: 45 m<sup>2</sup>
- › SITUATION: Top floor in the Kachelhaus



SCALE: 1:200

# STUDIO

- › SPACE: 90 + 24 m<sup>2</sup> | add. 55 m<sup>2</sup> adjacent area
- › HEIGHT: 3,30 m
- › LOCATION: intermediate floor in the ‚Kachelhaus‘

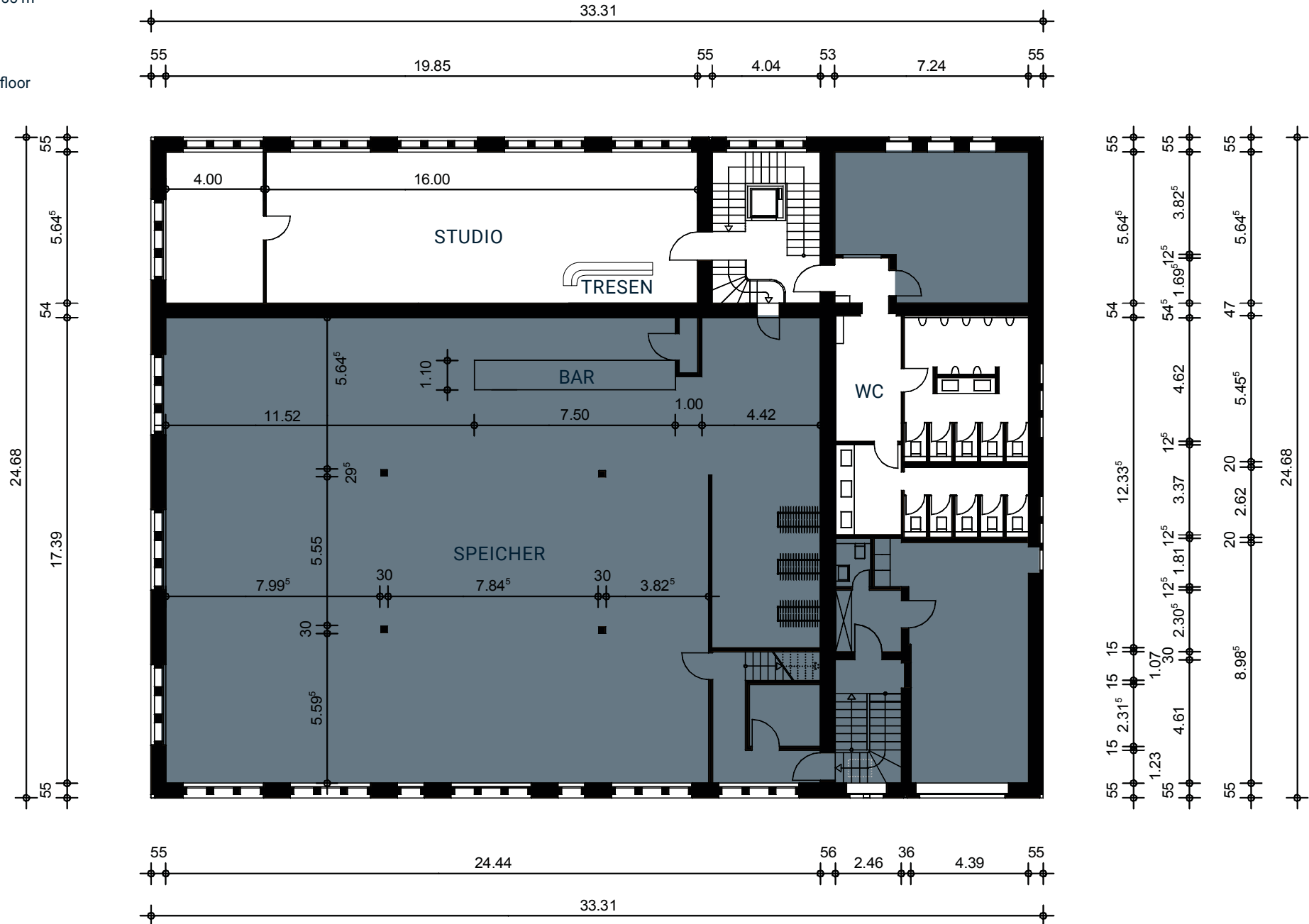


SCALE: 1:200



# STUDIO

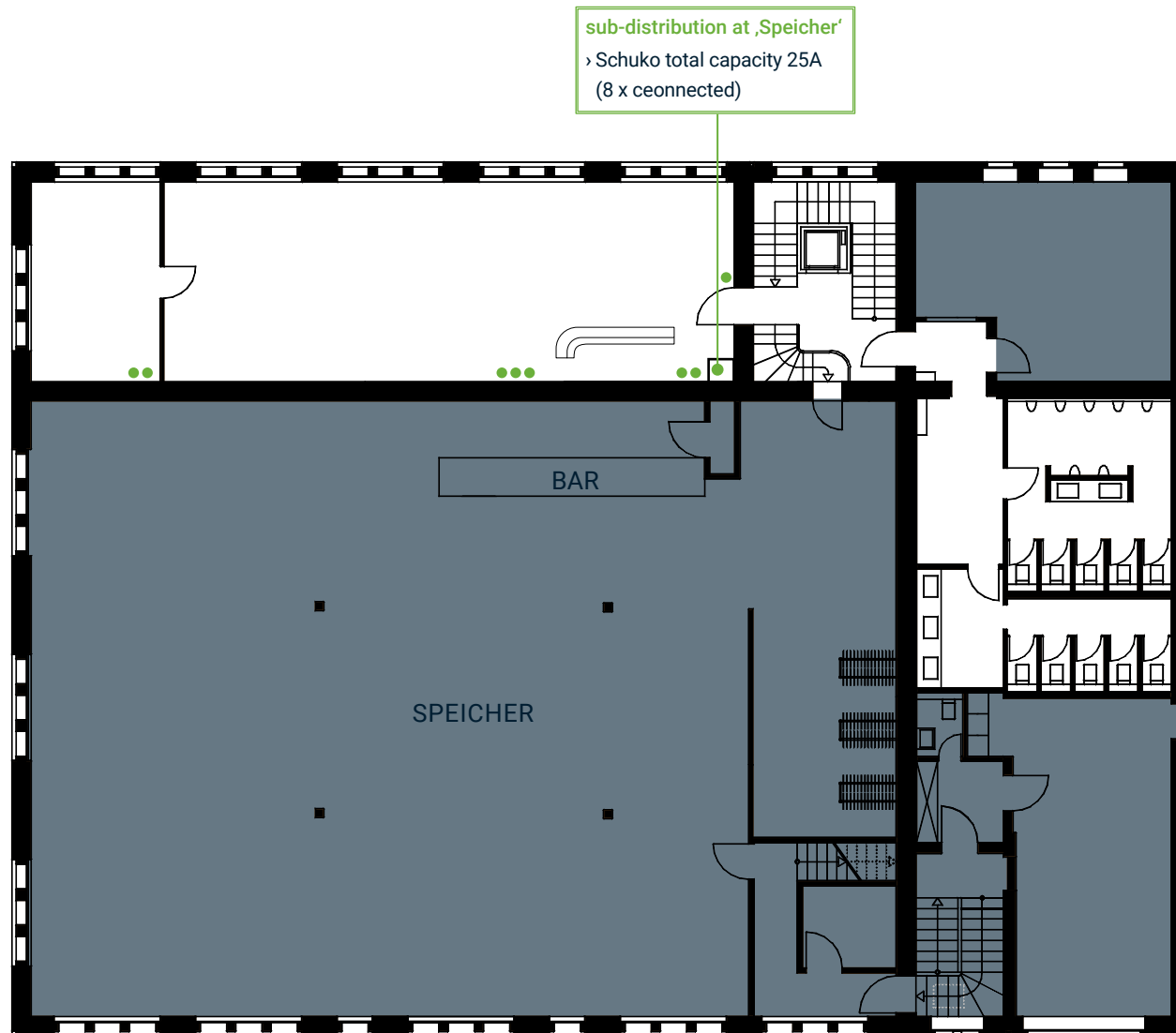
- › SPACE: 90 + 24 m<sup>2</sup> | add. 55 m<sup>2</sup> adjacent area
- › HEIGHT: 3,30 m
- › LOCATION: intermediate floor in the ‚Kachelhaus‘



SCALE: 1:200

# STUDIO

- › SPACE: 90 + 24 m<sup>2</sup> | add. 55 m<sup>2</sup> adjacent area
- › HEIGHT: 3,30 m
- › LOCATION: intermediate floor in the ‚Kachelhaus‘



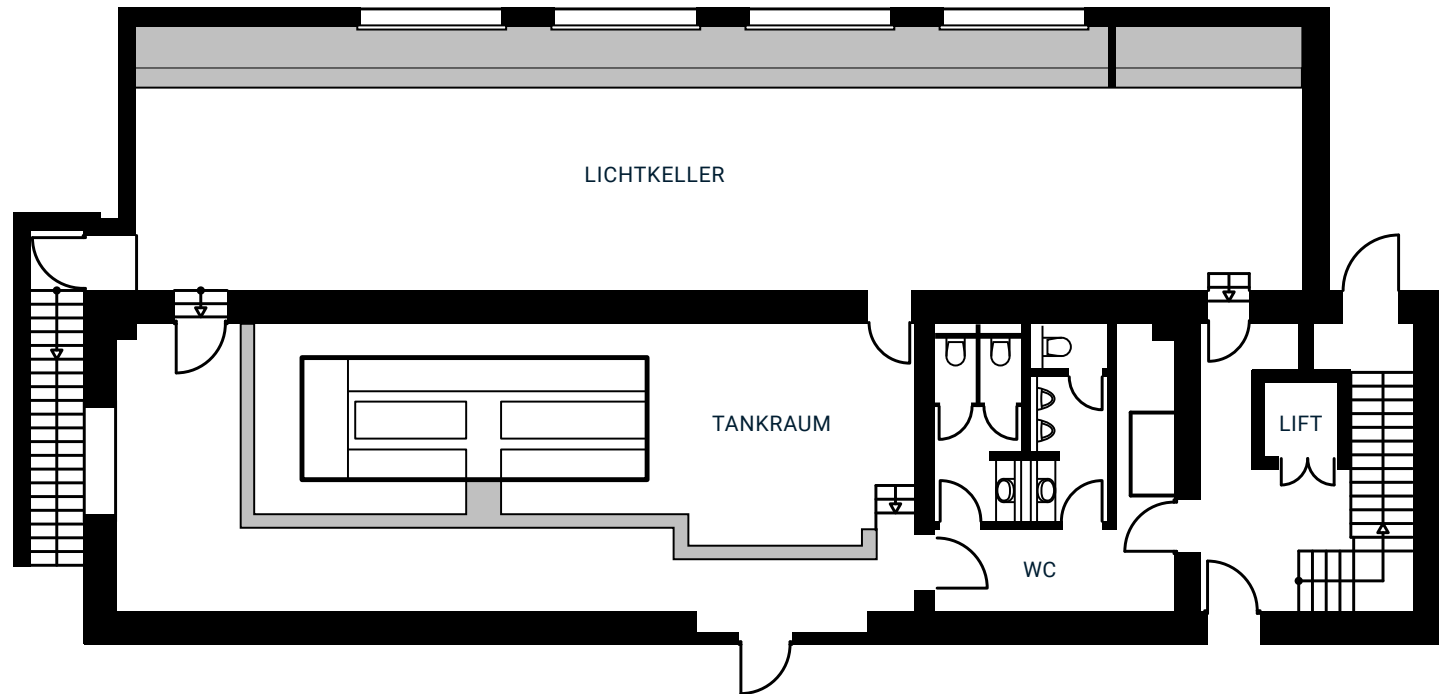
SCALE: 1:200

## TANKRAUM

- › SPACE: 82 m<sup>2</sup> | add. 15 m<sup>2</sup> adjacent space
- › HEIGHT: 3 m – 3,60 m
- › LOCATION: basement in the ‚Kachelhaus‘

## LICHTKELLER

- › SPACE: 109 m<sup>2</sup> | add. 15 m<sup>2</sup> adjacent space
- › HEIGHT: 3,60 m
- › LAGE: basement in the ‚Kachelhaus‘

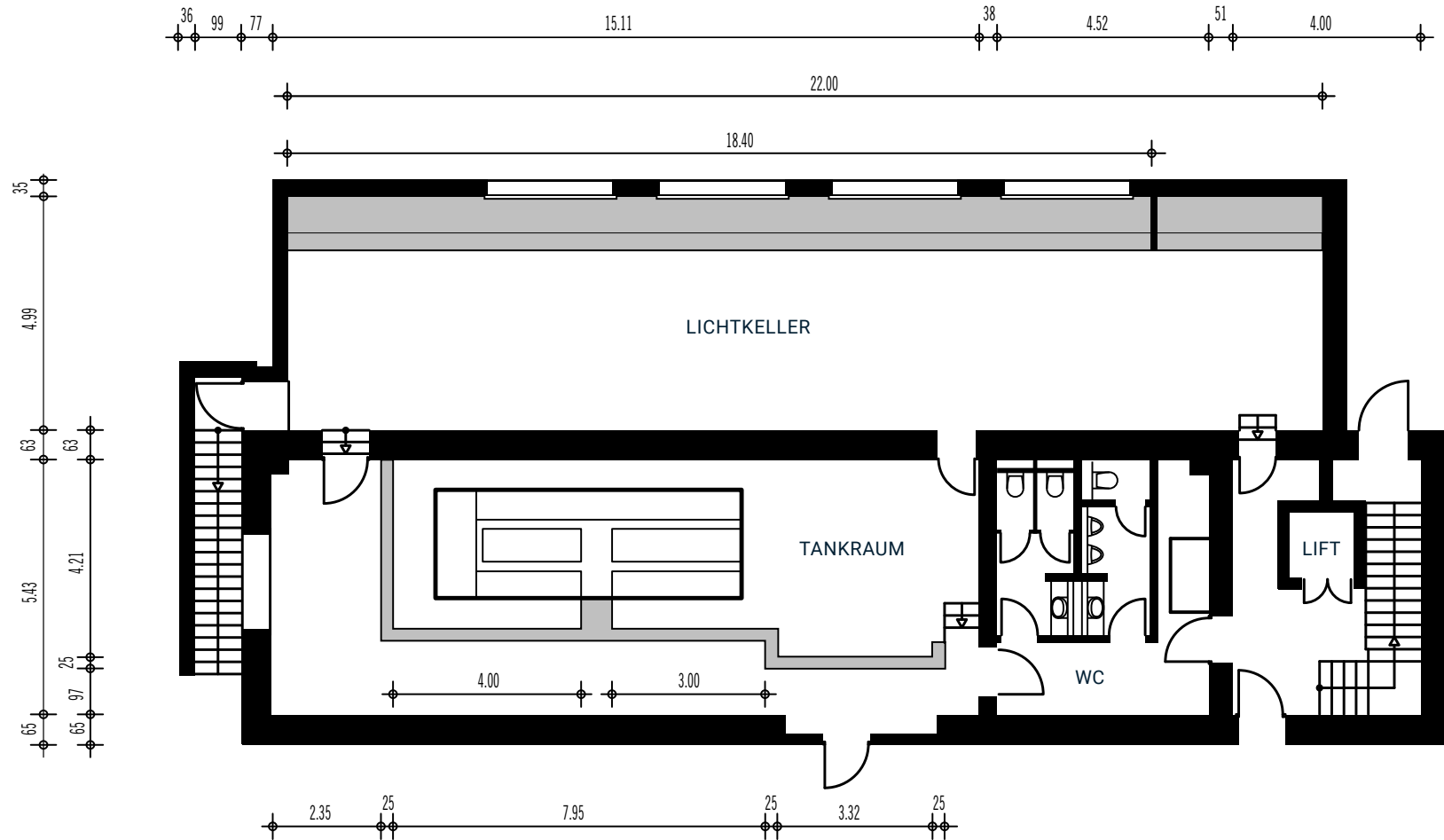


## TANKRAUM

- › SPACE: 82 m<sup>2</sup> | add. 15 m<sup>2</sup> adjacent space
- › HEIGHT: 3 m – 3,60 m
- › LOCATION: basement in the ‚Kachelhaus‘

## LICHTKELLER

- › SPACE: 109 m<sup>2</sup> | add. 15 m<sup>2</sup> adjacent space
- › HEIGHT: 3,60 m
- › LAGE: basement in the ‚Kachelhaus‘



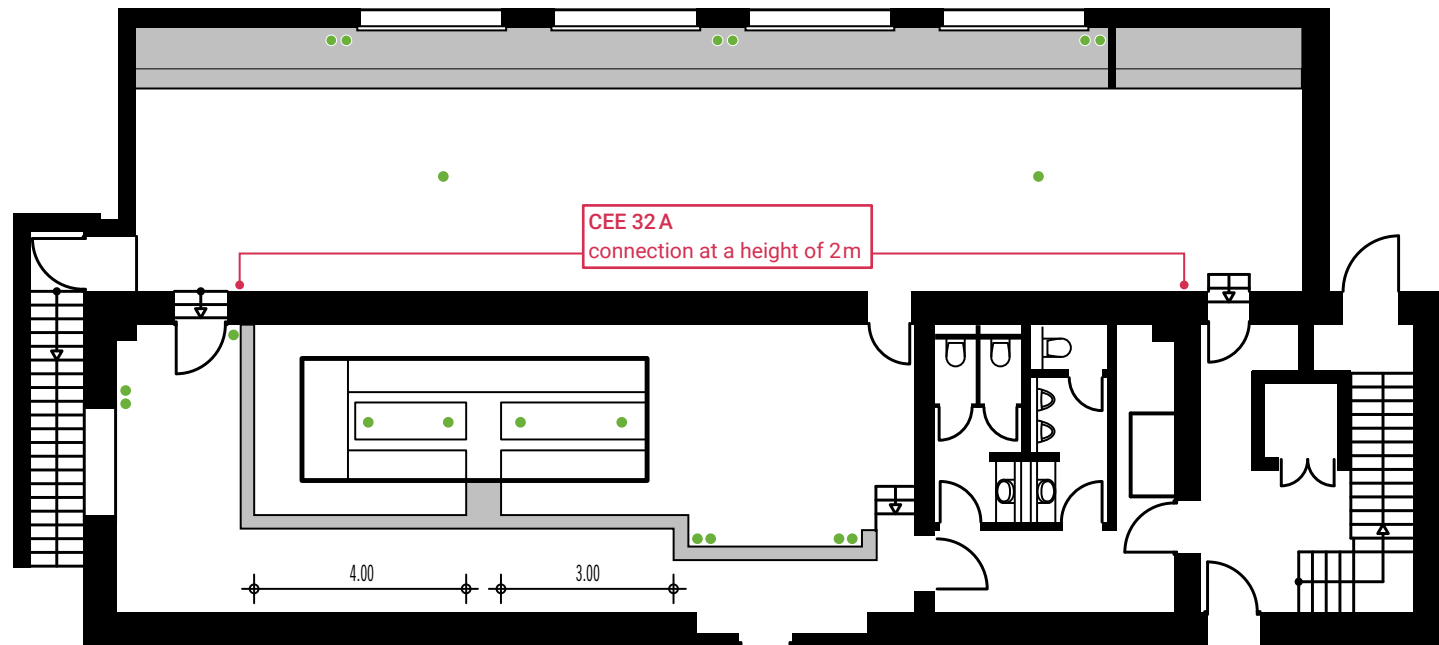
## TANKRAUM

- › SPACE: 82 m<sup>2</sup> | add. 15 m<sup>2</sup> adjacent space
- › HEIGHT: 3 m – 3,60 m
- › LOCATION: basement in the ‚Kachelhaus‘

## LICHTKELLER

- › SPACE: 109 m<sup>2</sup> | add. 15 m<sup>2</sup> adjacent space
- › HEIGHT: 3,60 m
- › LAGE: basement in the ‚Kachelhaus‘

● Schuko 16A



# PARK

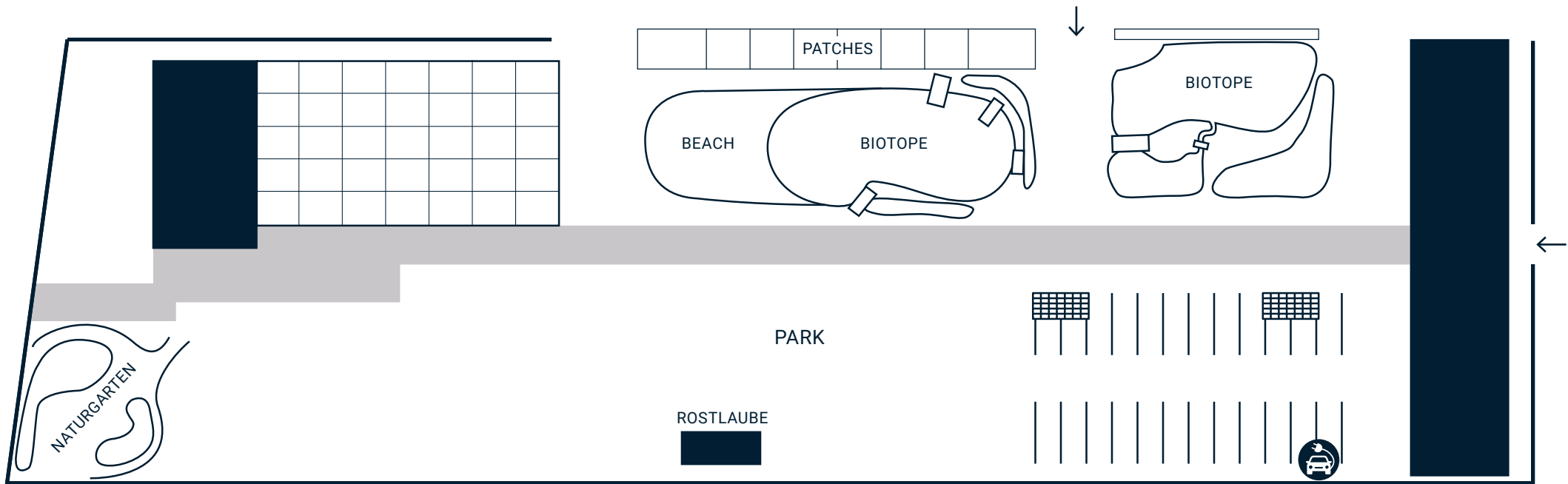
› SPACE: 5.600 m<sup>2</sup>

# ROSTLAUBE

› SPACE: 13 m<sup>2</sup> | add. 6 m<sup>2</sup> terrace

› HEIGHT: 2,20 m

› LOCATION: park, opposite beach area



 ROSE ARCHES

 EV CHARGING STATION

# PARK

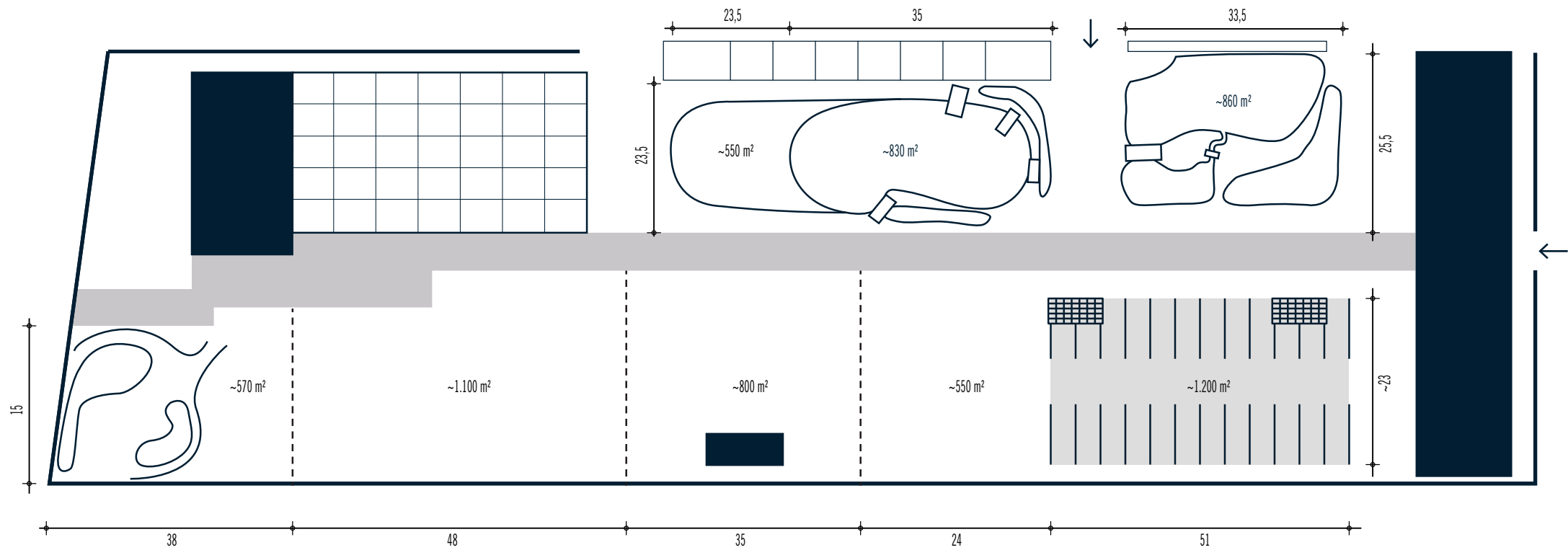
› SPACE: 5.600 m<sup>2</sup>

# ROSTLAUBE

› SPACE: 13 m<sup>2</sup> | add. 6 m<sup>2</sup> terrace

› HEIGHT: 2,20 m

› LOCATION: park, opposite beach area



# PARK

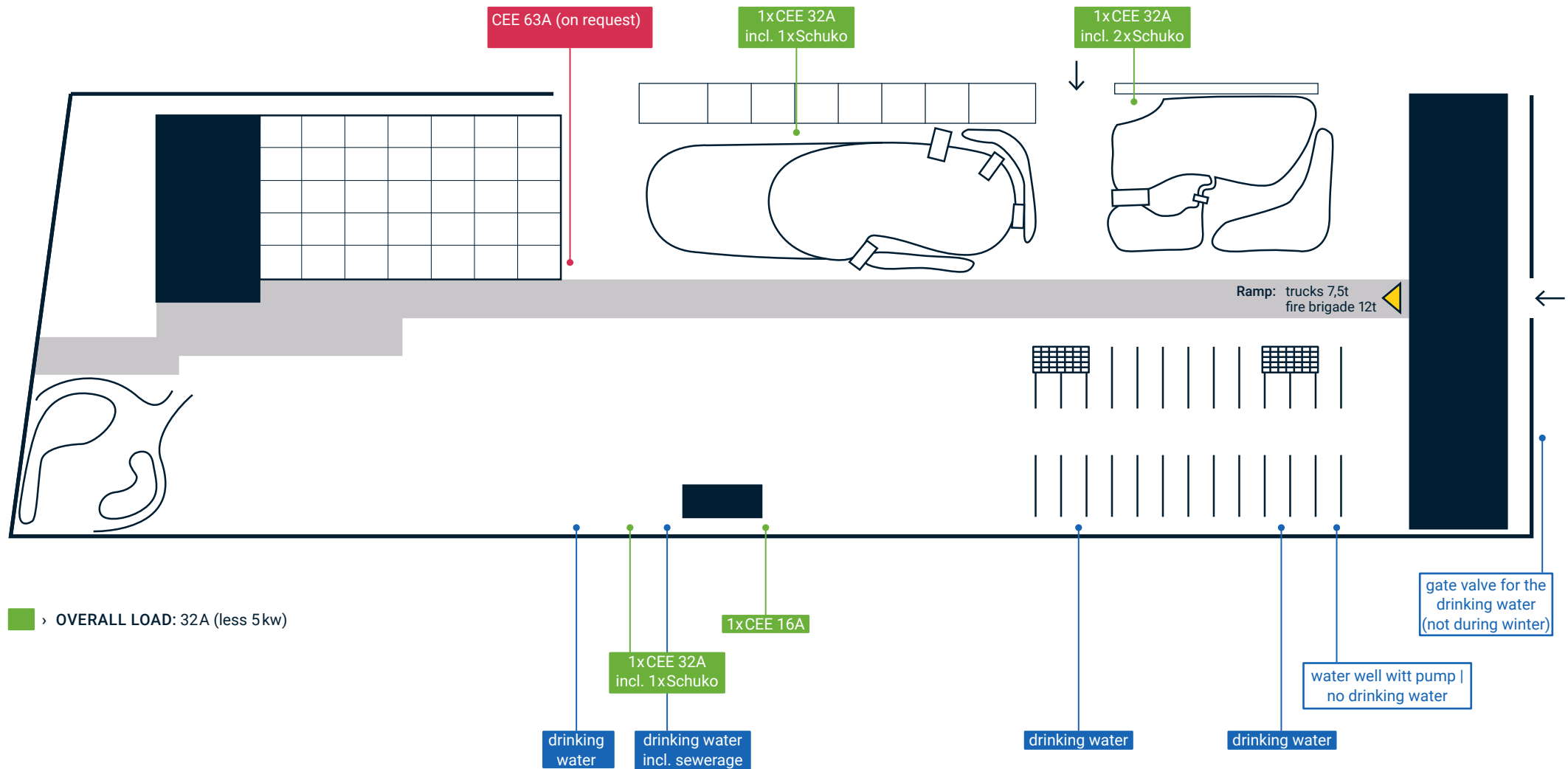
› SPACE: 5.600 m<sup>2</sup>

# ROSTLAUBE

› SPACE: 13 m<sup>2</sup> | add. 6 m<sup>2</sup> terrace

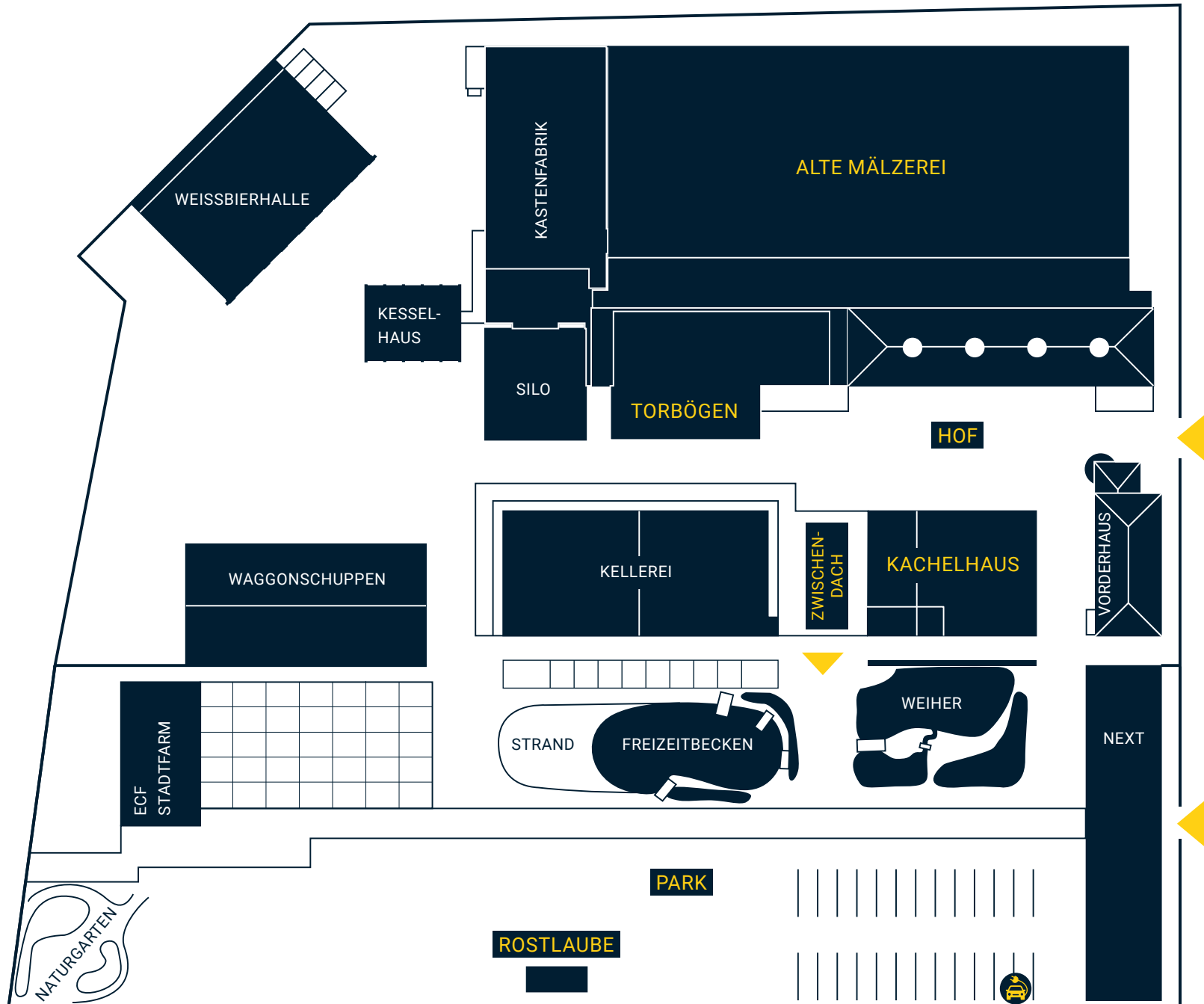
› HEIGHT: 2,20 m

› LOCATION: park, opposite beach area





# SITE PLAN



## KACHELHAUS

- › Stübchen ↗
- › Sonnendeck ↗
- › Maschinenhalle ↗
- › Speicher ↗
- › Studio ↗
- › Lichtkeller ↗
- › Tankraum ↗

## ALTE MÄLZEREI

- › Besondere Räume ↗
- › Hallen ↗
- › Treppen ↗
- › Gänge ↗

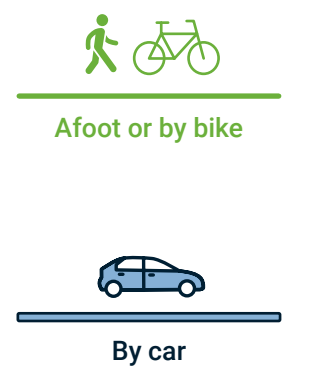
## AUSSEN

- › Park ↗
- › Rostlaube ↗
- › Hof ↗
- › Zwischendach ↗
- › Torbögen ↗

# ARRIVAL MAP



- Bessemerstr. 2-14  
12103 Berlin
- +49 30 755 17 125
- malzfabrik-event.de
- location@malzfabrik.de





## MALZFABRIK EVENT



Bessemerstr. 2-14  
12103 Berlin



+49 30 755 17 125



[malzfabrik-event.de](https://malzfabrik-event.de)



[location@malzfabrik.de](mailto:location@malzfabrik.de)