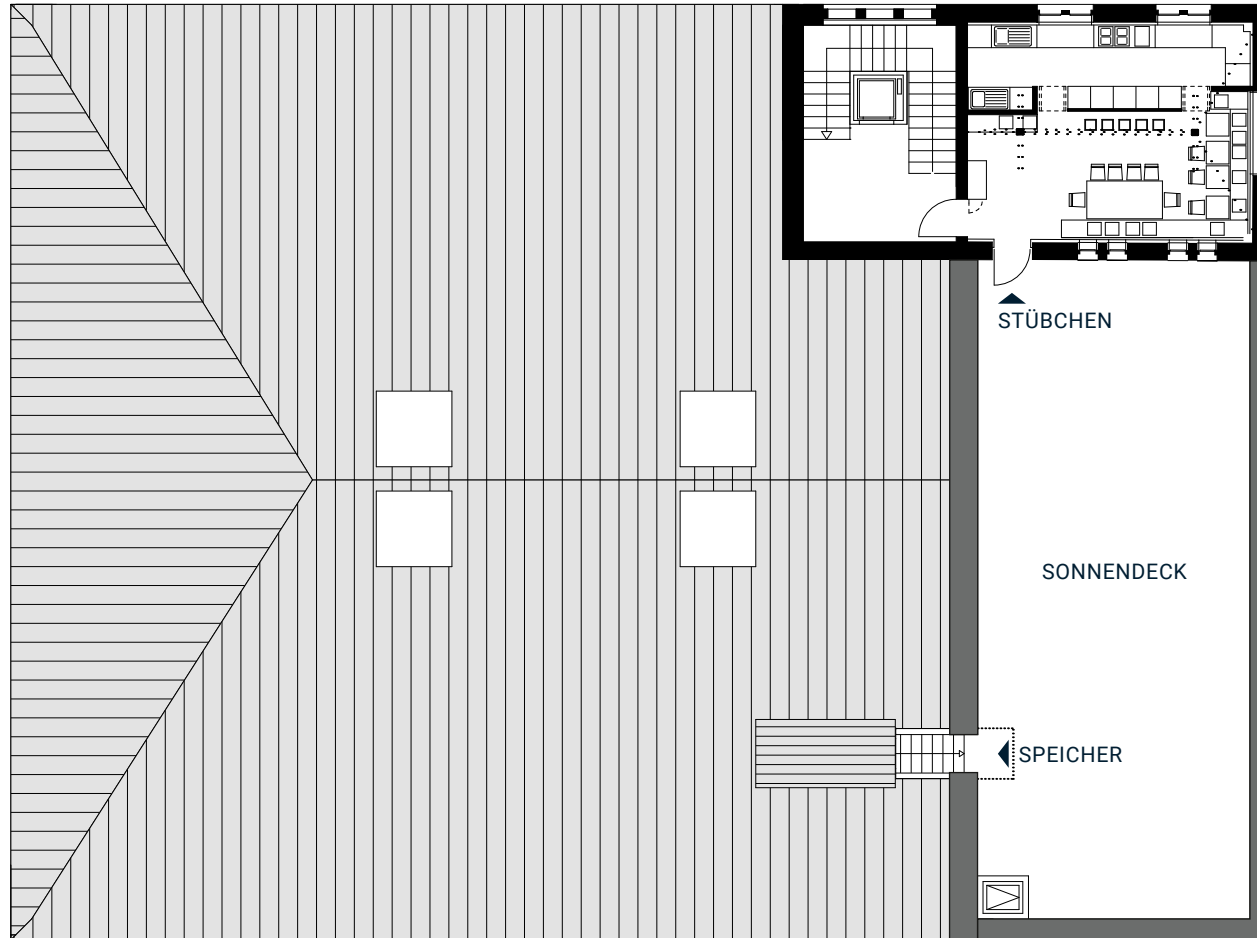


# SONNENDECK

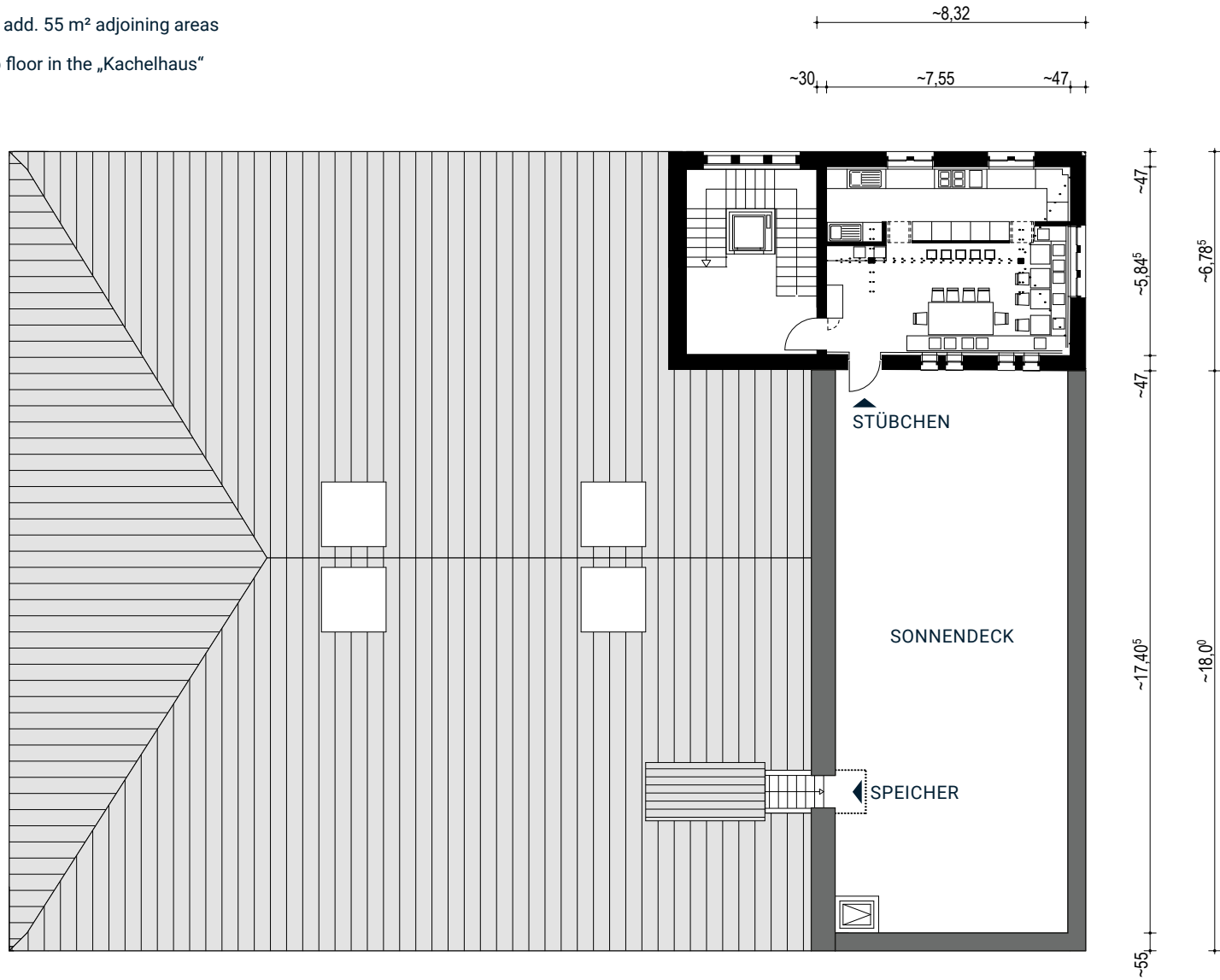
- › AREA: 130 m<sup>2</sup> | add. 55 m<sup>2</sup> adjoining areas
- › LOCATION: top floor in the „Kachelhaus“



SCALE: 1:200

# SONNENDECK

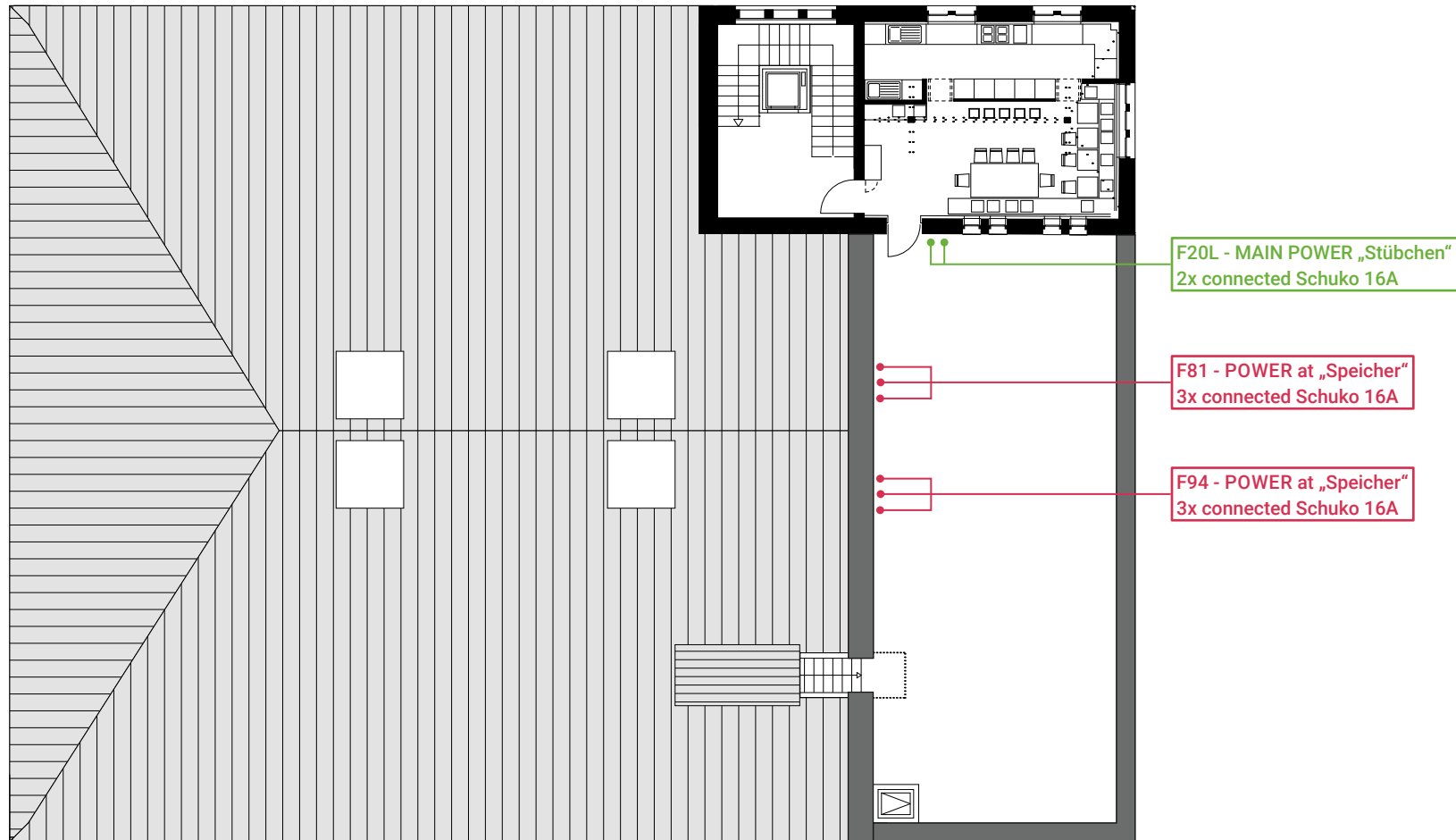
- › AREA: 130 m<sup>2</sup> | add. 55 m<sup>2</sup> adjoining areas
- › LOCATION: top floor in the „Kachelhaus“



SCALE: 1:200

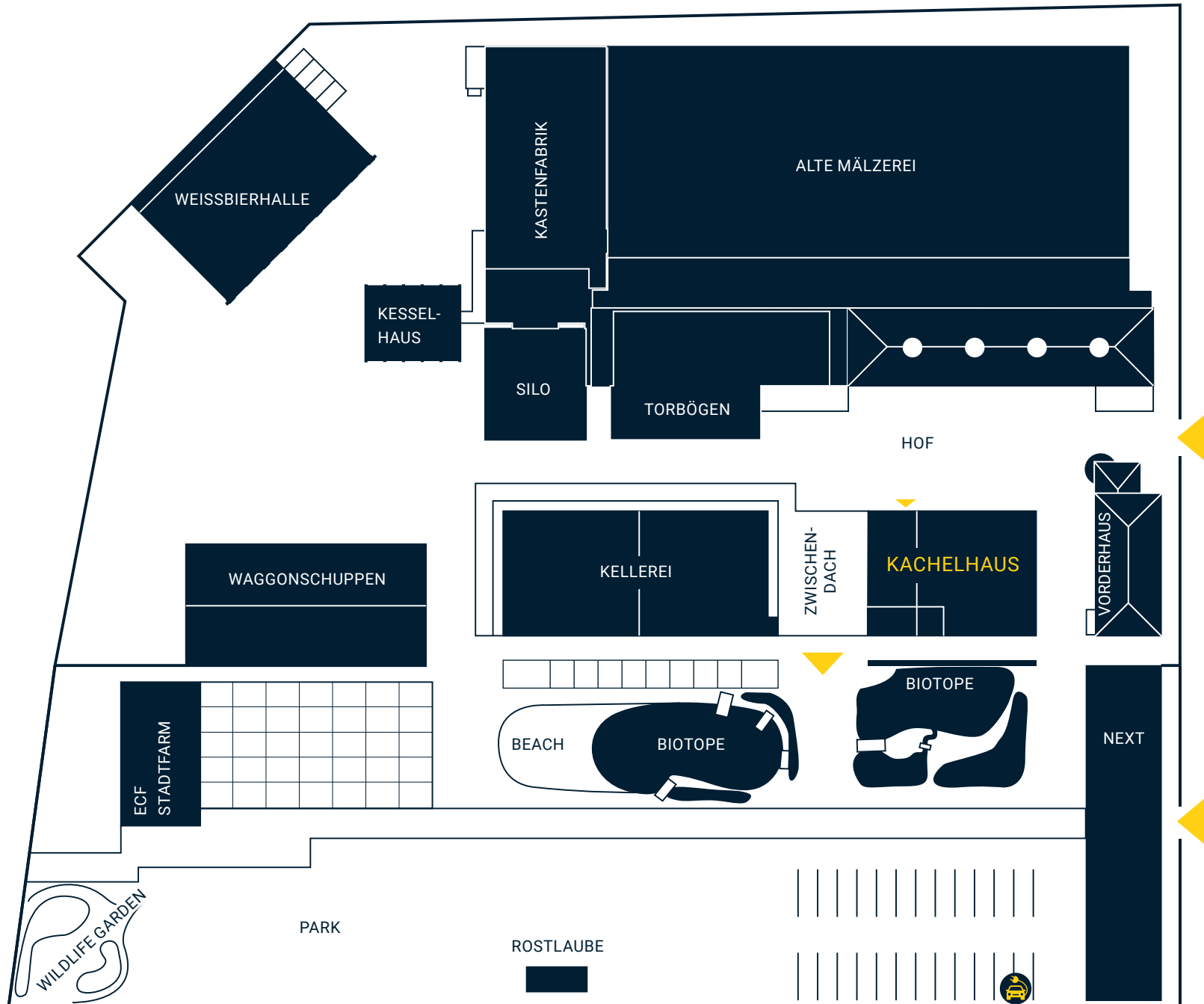
# SONNENDECK

- › AREA: 130 m<sup>2</sup> | add. 55 m<sup>2</sup> adjoining areas
- › LOCATION: top floor in the „Kachelhaus“



SCALE: 1:200

# GROUND VIEW



## KACHELHAUS

- ▶ Sonnendeck ↗
- › Maschinenhalle ↗
- › Speicher ↗
- › Studio ↗
- › Lichtkeller ↗
- › Tankraum ↗

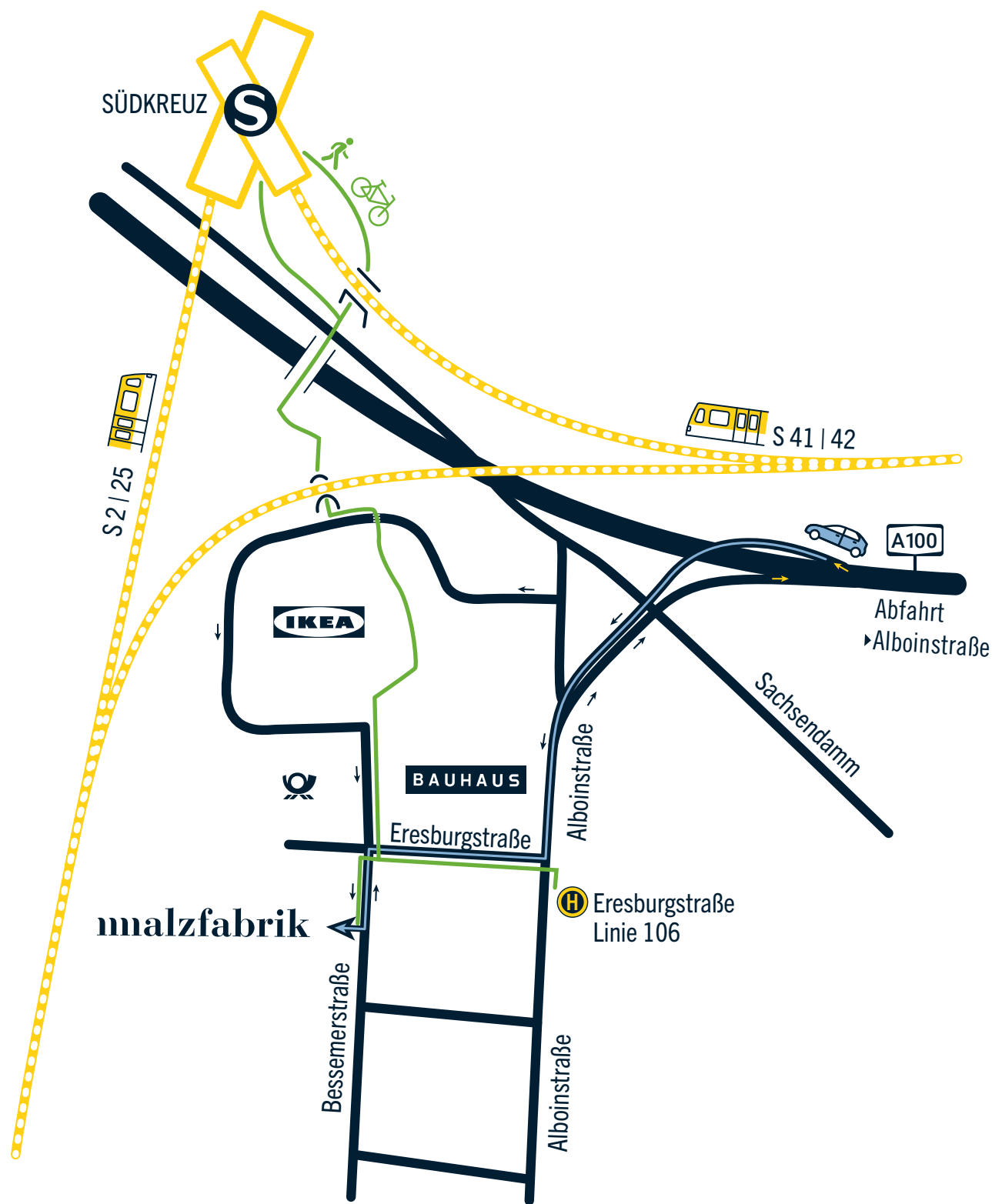
## ALTE MÄLZEREI

- › Special Rooms ↗
- › Halls ↗
- › Stair Cases ↗
- › Hallways ↗

## OUTDOORS

- › Park ↗
- › Rostlaube ↗
- › Hof ↗
- › Zwischendach ↗
- › Torbögen ↗

# APPROACH



- Bessemerstr. 2-14  
12103 Berlin
- +49 30 755 17 125
- malzfabrik-event.de
- location@malzfabrik.de



## MALZFABRIK EVENT



Bessemerstr. 2-14  
12103 Berlin



+49 30 755 17 125



[malzfabrik-event.de](https://malzfabrik-event.de)



[location@malzfabrik.de](mailto:location@malzfabrik.de)