

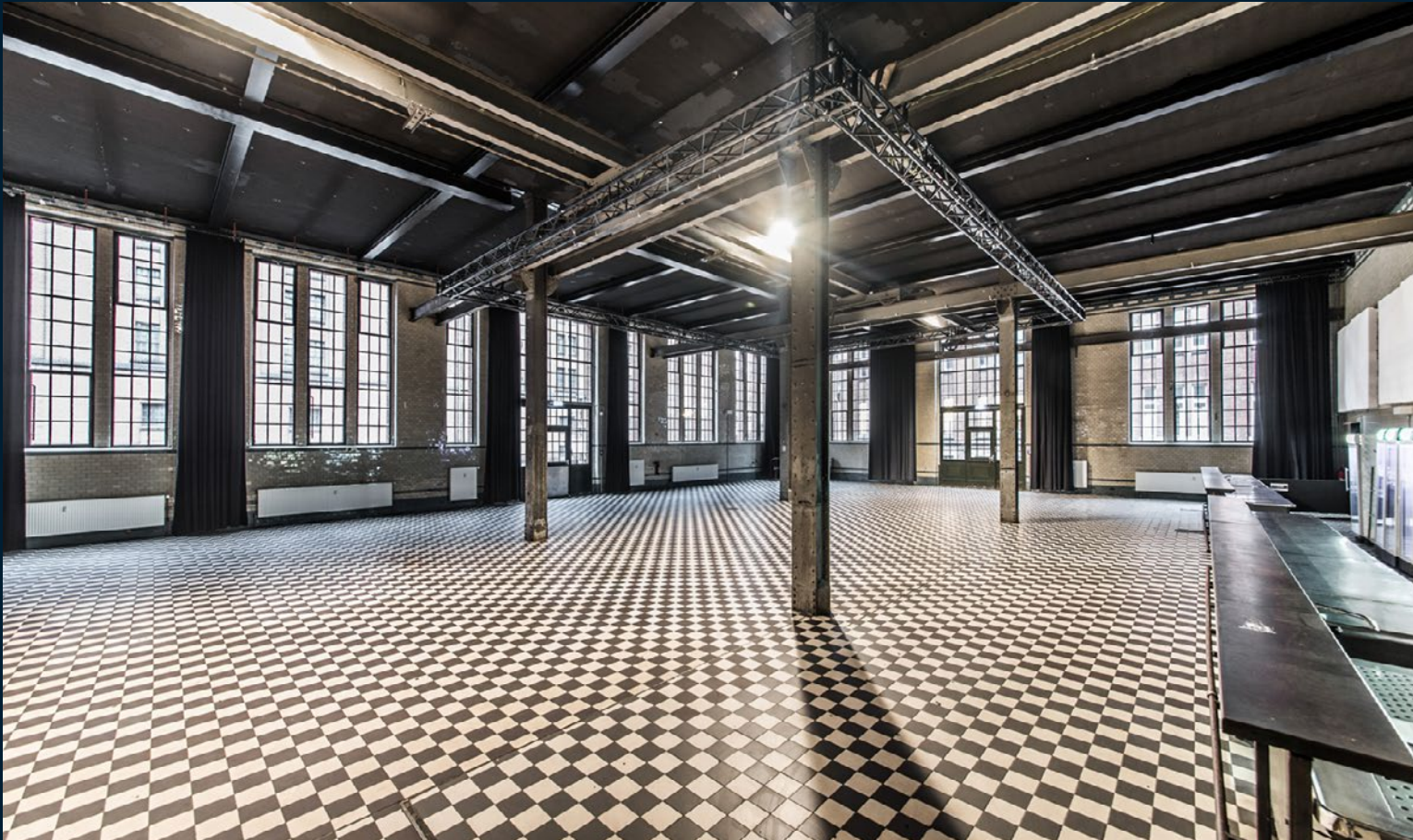
EVENT LOCATIONS



MALZFABRIK EVENT

+49 30 755 17 125 • location@malzfabrik.de





MASCHINENHALLE

- › **AREA:** 425 m², additional 210 m² adjoining spaces
- › **HEIGHT:** 5,60 m to 6,40 m
- › **LOCATION:** ground floor of the 'Kachelhaus', barrier-free
- › **INDUSTRIAL HALL** with black and white tile flooring, tiled walls, steel ceiling construction, lattice windows and movable carriers
- › **IDEAL FOR:** work functions, dinners, conferences, meetings, presentations, concerts, as a film or photo shoot location
- › **CAPACITY:** up till 600 people standing, 350 people in row seating, 300 people at table seating, 170 people at banquet seating
- › **INFRASTRUCTURE:** 80 m² entrance area, includes cloakroom, 9,30 m bar, modern heating system, option to block out light, 4-point truss for technical equipment, 65 m² modern restrooms, 45 m² adjoining room (can be used as catering back of house or lounge), Wi-Fi
- › **TECHNICAL EQUIPMENT:** basic audio and lighting systems, details and prices available on request
- › **RECOMMENDATION:** booking in combination with the outdoor courtyard, 'Zwischendach' and terrace with park views



The 'Maschinenhalle' is a part of the 'Kachelhaus', our multifunctional event location that is guaranteed to make any occasion unforgettable. Its steel beams, hoists, and black and white tile flooring make up a remarkable industrial environment. In addition to the imposing hall, you will find an entrance area and a cloakroom accessible from the adjoining courtyard. With a smaller room located directly behind the bar, and an outdoor terrace with park views, this area provides your event with extra space.

The 'Maschinenhalle' is also available to hire as a film or photo shoot location.







SPEICHER

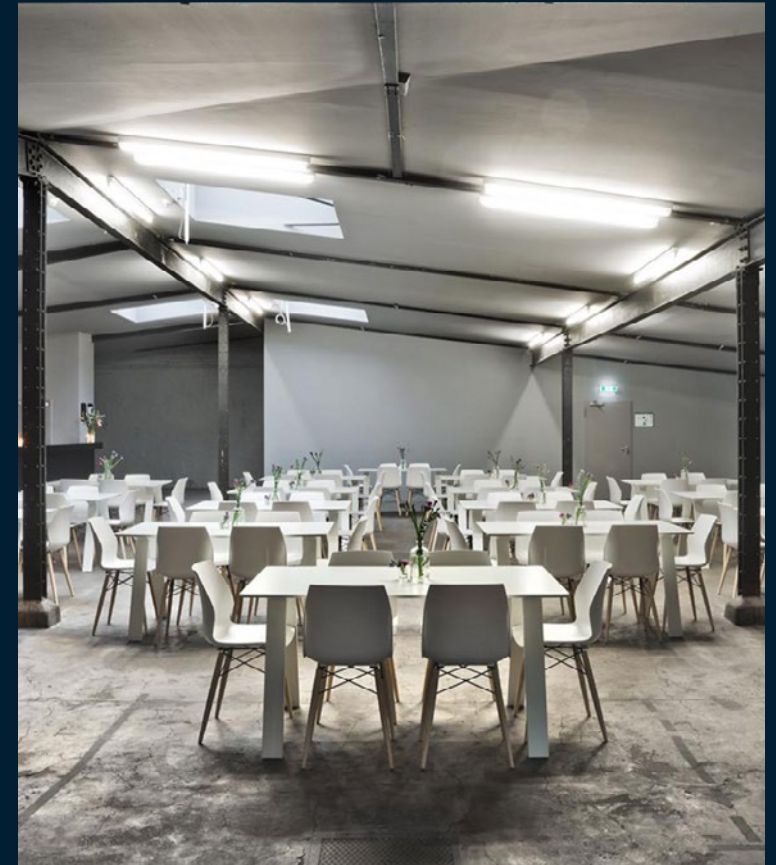
- › **AREA:** 370 m² | additional 80 m² adjoining spaces
- › **HEIGHT:** 2,50 m to 3,80 m
- › **LOCATION:** upper floor in the 'Kachelhaus'
- › **GABLED ROOF** with steel beams and insulation
- › **IDEAL FOR:** work functions, workshops, presentations, conferences
- › **CAPACITY:** up to 200 people, 200 people in row seating, 200 people at table seating, 170 at banquet seating
- › **INFRASTRUCTURE:** 25 m² cloakroom, 7,5 m bar, modern heating system, option to block out light, 55 m² restrooms, close to elevator, Wi-Fi
- › **TECHNICAL EQUIPMENT:** basic audio and lighting systems, details and prices available on request
- › **RECOMMENDATION:** booking in combination with the outdoor 'Sonnendeck' or the 'Studio'



The 'Speicher', located on the top floor of the 'Kachelhaus', is the second largest space in this multifunctional event location, and has a remarkably rustic ambience. Concrete flooring and steel beams provide plenty of industrial charm. Its window façades and skylights add just the right ambient lighting to match.



© 2019 Gene Glover / Agentur Focus



© Offenblen.de / Awin



© Berlin's Unique Gin Festival





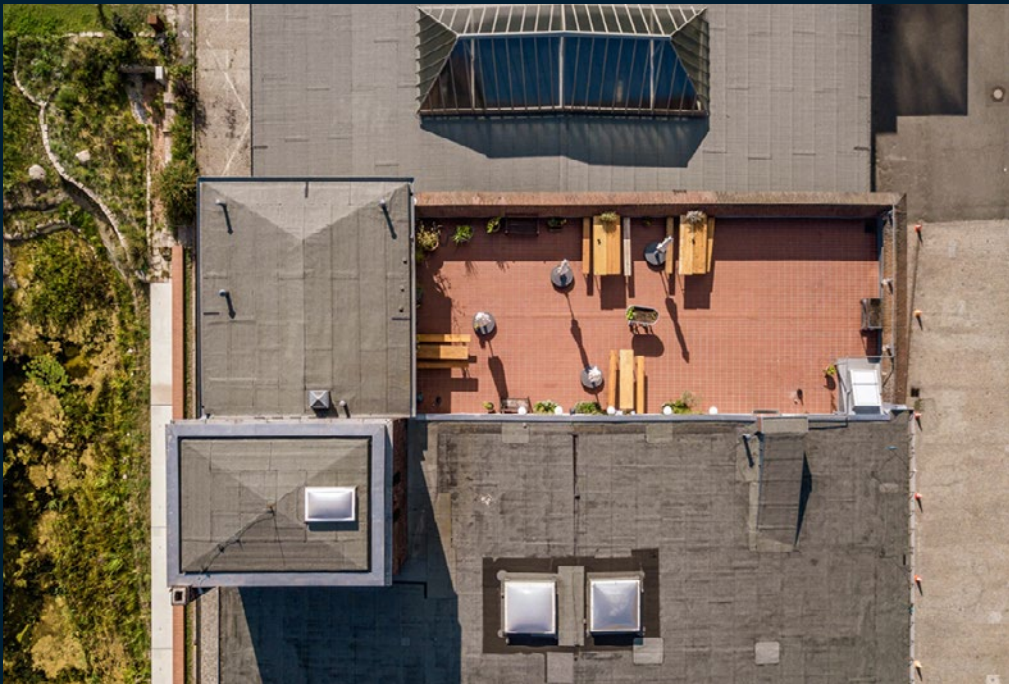
SONNENDECK

- › **AREA:** 130 m² | add. 55 m² adjoining areas
- › **LOCATION:** top floor of the 'Kachelhaus'
- › **UNPARALLELED VIEW** of the Malzfabrik's grounds
- › **IDEAL FOR:** work functions, barbecues, workshops, as a film or photo shoot location
- › **CAPACITY:** up to 130 people standing, up to 125 people in row seating
- › **INFRASTRUCTURE:** 55 m² modern restrooms, Wi-Fi, elevator
- › **TECHNICAL EQUIPMENT:** available on request
- › **RECOMMENDATION:** booking in combination with the 'Speicher', the 'Studio' and/or the 'Stübchen'



With imposing views of the area and close proximity to the drying kilns – the landmark of the Malzfabrik – the 'Sonnendeck' on the 'Kachelhaus' top floor is one of our most beloved outdoor spaces. With a capacity to host up to 130 people, this terrace is perfect for small celebrations.

The 'Sonnendeck' is also available to hire as a unique film or photo shoot location.







STÜBCHEN

- › **AREA:** 45 m²
- › **HEIGHT:** 2.40m–2.70m
- › **SITUATION:** Top floor in the Kachelhaus
- › **COZY DINING ROOM** with integrated kitchen
- › **IDEAL FOR:** Meetings, small presentations or a meal in a relaxed atmosphere
- › **CAPACITIES:** up to 25 people standing, up to 15 people in seating
- › **INFRASTRUCTURE:** kitchen area with stove, sink and refrigerator, modern sanitary area 55 m², WiFi, elevator
- › **TECHNOLOGY:** details and prices on request
- › **RECOMMENDATION:** Booking in combination with the Sonnendeck



In the parlor on the top floor of the Kachelhaus you will find – in addition to the adjoining Sonnendeck and its impressive view – a cozy dining room with an integrated kitchen. The living room atmosphere created from wooden elements is perfect for small dinners, presentations and meetings.











STUDIO

- › **AREA:** 90 + 24 m² | add. 55 m² adjoining areas
- › **HEIGHT:** 3,30 m
- › **LOCATION:** central floor of the 'Kachelhaus'
- › **STUDIO** with clear white walls and window façades providing ample sunlight
- › **IDEAL FOR:** workshops, presentations, small work functions, production office
- › **CAPACITY:** up to 50 people in row seating, up to 50 people at table seating
- › **INFRASTRUCTURE:** bar area with sinks and a refrigerator, an installed projector, Wi-Fi, elevator, 55 m² modern restrooms, 24 m² adjoining room
- › **TECHNICAL EQUIPMENT:** basic audio and lighting systems, details and prices available on request
- › **RECOMMENDATION:** booking in combination with 'Speicher' and/or 'Maschinenhalle'



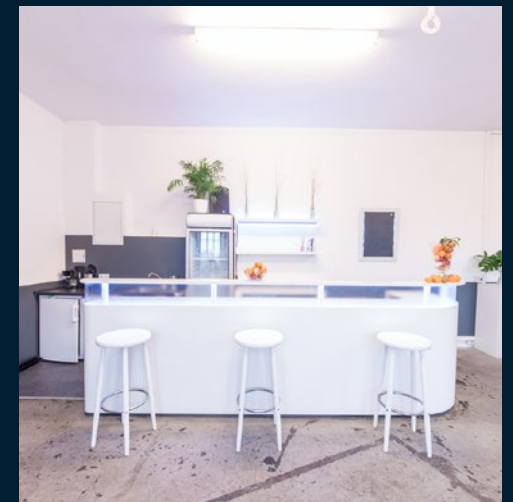
The 'Studio', filled with sunlight through its wide window façades, looks out onto the park and includes a small adjoining room. It is situated on the central floor of the 'Kachelhaus', and its layout is perfectly suited to hosting small events, or as a production office when booked in combination with the other areas.



© Berlin's Unique Gin Festival



© Engagement Global/Frederik Schramm





inhalt 26500 Ltr.



TANKRAUM

- › **AREA:** 82 m² | add. 15 m² adjoining areas
- › **HEIGHT:** 3 m bis 3,60 m
- › **LOCATION:** basement of the 'Kachelhaus'
- › **FORMER HEATING ROOM** with brick walls and originally preserved objects
- › **IDEAL FOR:** workshops, presentations, small work functions, escape room, production office
- › **CAPACITY:** up to 80 people standing, up to 20 people seated in the tank area
- › **INFRASTRUCTURE:** ~15m² modern restrooms, WIFI
- › **TECHNICAL EQUIPMENT:** seating area with built-in, extendable flat screen Samsung TV
- › **RECOMMENDATION:** booking in combination with 'Lichtkeller'



The 'Tankraum' in the 'Kachelhaus' basement is brimming with history, not least because of the originally preserved brick walls. Another special feature lends the room its name: the former heating tank, which has been cut in half and renovated into a 20-person seating area

'Tankraum' is also available as a unique film or photo shoot location.



© Engagement Global/Frederik Schramm



© Foodsharing Festival / offenblen.de





LICHTKELLER

- › **AREA:** 109 m² | add. 15 m² adjoining areas
- › **HEIGHT:** 3,60 m
- › **LOCATION:** basement of the 'Kachelhaus'
- › **SEMINAR ROOM** with rustic brick walls
- › **IDEAL FOR:** workshops, presentations, small work functions, escape room, production office
- › **CAPACITY:** up to 110 people standing, up to 72 people in row seating
- › **INFRASTRUCTURE:** modern restrooms, WIFI, projector model Optoma EH 500 FullHD DLP – 4700Ansi, projection screen StumpflAV 4:3 (240×180 cm)
- › **TECHNICAL EQUIPMENT:** available on request
- › **RECOMMENDATION:** booking in combination with 'Tankraum'



Its rustic brick walls, concrete floor, tubular form and narrow window façade give the 'Lichtkeller' a distinctive look. Located in the basement of the 'Kachelhaus', this space is fitted with technical equipment ideal for workshops, seminars and presentations.







HOF

- › **CLINKER BRICK-BUILT OPEN AREAS** surrounding a cobble-stone pavement
- › **IDEAL FOR:** summer festivals, barbecues, work functions, sporting events, markets or as a film or photo shoot location
- › **INFRASTRUCTURE:** parking spaces available on request, CEE 32A via the park, mains water supply
- › **RECOMMENDATION:** booking in combination with 'Maschinenhalle' and/or 'Zwischendach'



With its cast-iron gate entrance and brick buildings to either side, the courtyard cuts a striking figure. The cobble-stone pavement is in some places laced with tram tracks, harking back to the former industrial use of the malting house. From the courtyard, all other event and set locations are closely accessible, especially the two sheltered areas of the 'Torbögen' and the 'Zwischendach' which make up the rest of the clinker brick-built outdoor areas.

The courtyard is also available to hire as a unique film or photo shoot location.







PARK

- › **AREA:** 5.600 m²
- › **A GREEN FEEL-GOOD OASIS** for special events with an unforgettable, unique atmosphere
- › **IDEAL FOR:** summer festivals, work functions, barbecues, sporting events, as a film or photo shoot location
- › **CAPACITY:** up to 1.000 people
- › **INFRASTRUCTURE:** parking facility on request, maximum load approx. CEE 32A, additional energy on request, running water and wastewater connections
- › **RECOMMENDATION:** booking in combination with 'Rostlaube'

The surrounding park grounds, which cover a total area of 15,000 m², are ideal for open air events such as workshops, weddings, work functions, summer parties, picnics, barbecues, festivals or private parties.

Diversity and nature meet here. The park provides you with a wonderful opportunity to welcome guests into fresh air. This green area houses the 'Rostlaube', a swimming pool with a beach area, a biotope, outdoor restrooms, a barbecue grill with a parking area, an urban farm, a grandstand, and a vegetable-, nature- and stone garden as well as insect hotels bordering a spacious lawn.

The park is also available to hire as a unique film or photo shoot location.







malzfabrik



ROSTLAUBE

- › **AREA:** 13 m² | add. 6 m² terrace
- › **HEIGHT:** 2,20 m
- › **LOCATION:** park, directly opposite the beach area
- › **RENOVATED SHIPPING CONTAINER** with plenty of charm, its own wooden terrace and an uninterrupted view of the parkland
- › **IDEAL FOR:** summer festivals, barbecues, small work functions, meetings, private parties
- › **CAPACITY:** up to 10 people inside, up to 50 people when including the terrace area
- › **INFRASTRUCTURE:** A + + refrigerator with freezer compartment, 1.6 m kitchen sink area with mains water supply, fitted with indoor lighting system, 1 x CEE 16 A supply in outdoor area, access to restrooms
- › **FACILITIES:** timber floorboards, mobile bar, disco ball, kitchenware, awning over the wooden terrace, tabletop Teufel stereo speakers with connecting mini-jack cable
- › **RECOMMENDATION:** booking in combination with park

Nestled into the centre of the parkland, the 'Rostlaube' is a prime event location. The large window façades provide a stunning view of the grounds. The container is fitted with a sound system, kitchen area and furniture, making it an ideal location for smaller celebrations. The 'Rostlaube' is surrounded by grass meadows and is just a stone's throw away from the urban farm, beach, grandstand, outdoor restrooms and the wildlife garden.







ZWISCHENDACH

- › **AREA:** 475 m²
- › **HEIGHT:** 4,50 m to 7,40 m
- › **LOCATION:** between 'Kachelhaus' and 'Kellerei'
- › **SHELTERED OUTDOOR AREA** with an industrial-style roof made of wood and glass domes
- › **IDEAL FOR:** summer festivals, work functions, barbecues, sporting events, markets, as a film or photo shoot location
- › **CAPACITY:** up to 400 people standing, up to 300 people in row seating
- › **INFRASTRUCTURE:** parking spaces, maximum load approx. CEE 32A via the park, mains water supply, ramp belonging to the tenant collective available on request
- › **RECOMMENDATION:** booking in combination with 'Maschinenhalle', courtyard and/or park



The roof connects the 'Kachelhaus' building to the 'Kellerei', as well as linking the courtyard to the park. This sheltered area is remarkably light because of its open structure with two sides leading to the courtyard and park respectively and two glass domes built into the roof. The structure's wood and steel combination has a special charm, which is complemented by the two supporting brick walls.

The 'Zwischendach' is also bookable as unique film and photo shoot location.



© Engagement Global / Frederik Schramm

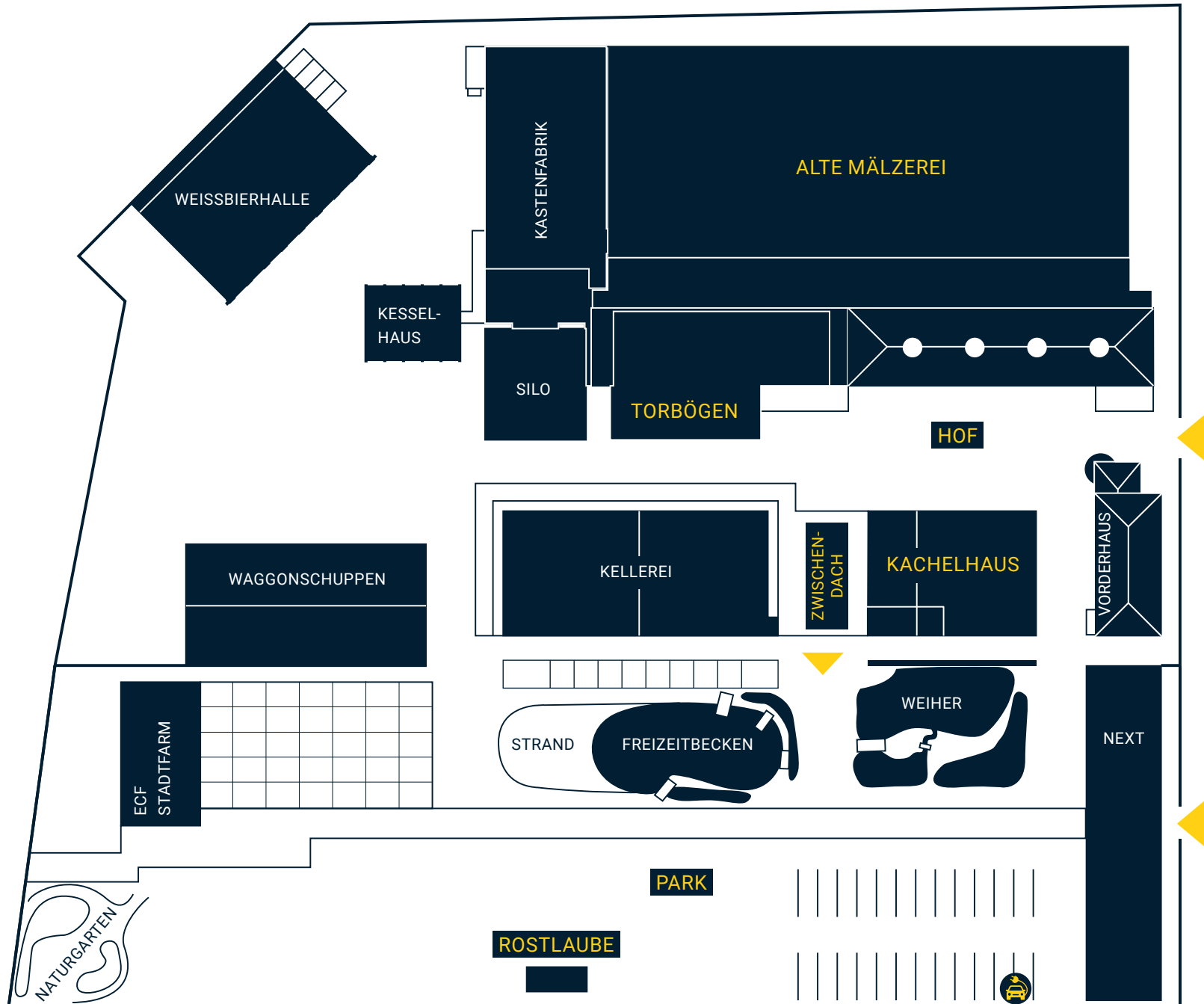


© Heureka 2017

SUMMARY

	CAPACITIES				AREA				
	in people				in meters				ADJACENT AREAS
	STANDING	ROW SEATING	TABLE	BANQUET	m²	LENGTH	WIDTH	HEIGHT	
MASCHINENHALLE	600	350	300	170	425	24,5	17,4	5,6 - 6,4	210
SPEICHER	200	200	200	170	370	20,5	17,4	2,5 - 3,8	80
STUDIO	50	50	50	–	90 + 24	16	5,6	3,3	55
SONNENDECK	130	125	–	–	130	17,8	7,6	–	55
STÜBCHEN	25	–	15	–	45	7,6	5,8	2,7	55
LICHTKELLER	110	72	–	–	109	22	5	3,6	25
TANKRAUM	80	–	–	–	82	15,1	5,4	3,6	25
ZWISCHENDACH	400	300	–	–	450	ca. 18	ca. 25	4,5 - 7,4	–
TORBÖGEN	–	–	–	–	–	–	–	–	–
HOF	–	–	–	–	–	–	–	–	–
ROSTLAUBE	10 - 50	–	–	–	13 + 6	–	–	2,2	–
PARK	max. 1000	–	–	–	5.600	–	–	–	–

SITE PLAN



KACHELHAUS

- › Stübchen ↗
- › Sonnendeck ↗
- › Maschinenhalle ↗
- › Speicher ↗
- › Studio ↗
- › Lichtkeller ↗
- › Tankraum ↗

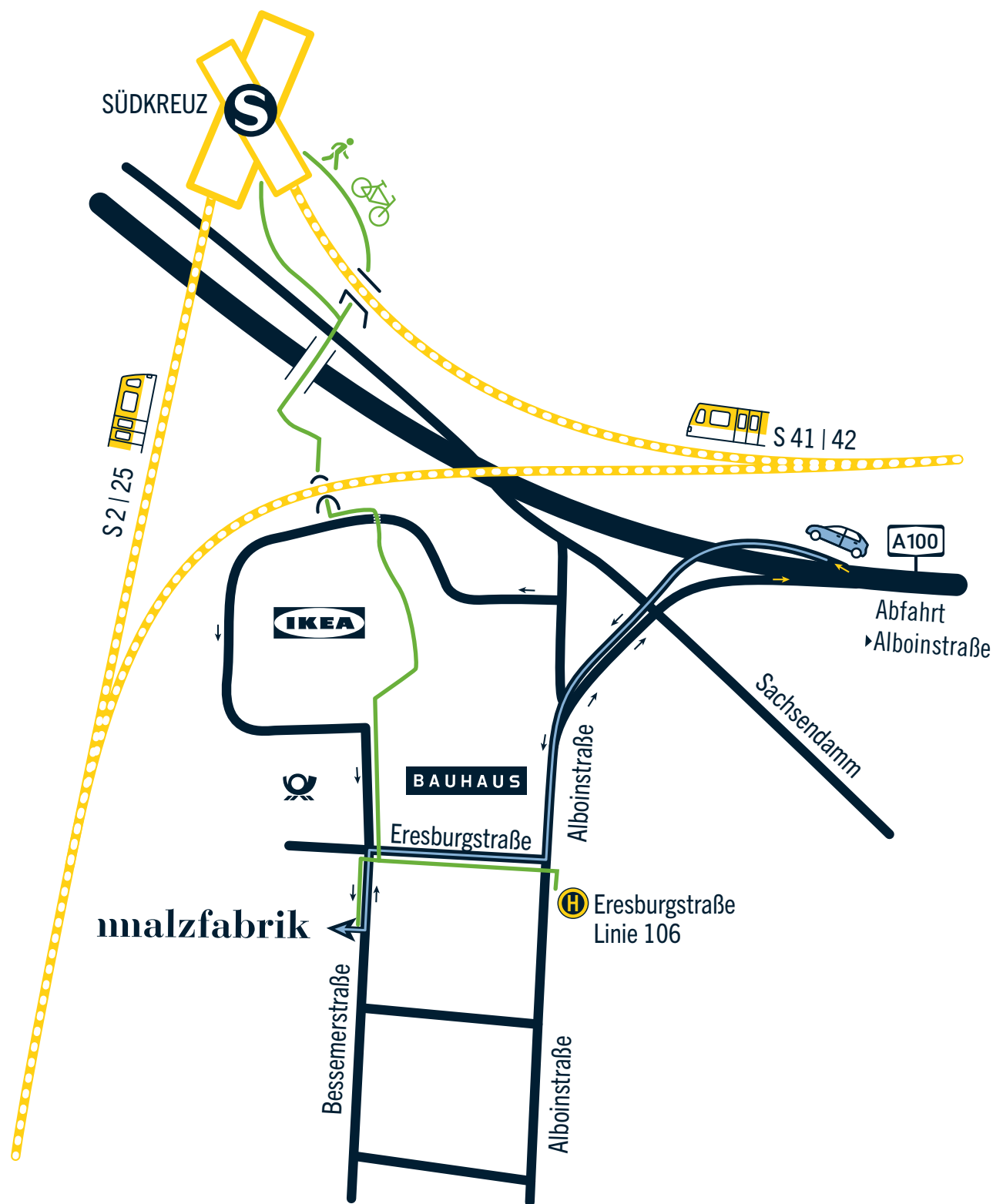
ALTE MÄLZEREI

- › Besondere Räume ↗
- › Hallen ↗
- › Treppen ↗
- › Gänge ↗

AUSSEN

- › Park ↗
- › Rostlaube ↗
- › Hof ↗
- › Zwischendach ↗
- › Torbögen ↗

ARRIVAL MAP



MALZFABRIK EVENT

-  Bessemerstr. 2–14
12103 Berlin
-  +49 30 755 17 125
-  malzfabrik-event.de
-  location@malzfabrik.de



Afoot or by bike



By car



Bessemerstr. 2-14
12103 Berlin



+49 30 755 17 125



malzfabrik-event.de



location@malzfabrik.de